

INDUSTRIAL, FLEET & AUTOMOTIVE EQUIPMENT



**YOUR CANADIAN MANUFACTURER &
PROFESSIONAL EQUIPMENT SUPPLIER**

SUPPORTING OUR CANADIAN DISTRIBUTORS COAST TO COAST SINCE 1969

SF2025/26

SHOP PRESS, WORKBENCHES & CART

CANADIAN-MADE, THE PERFECT SHOP PRESS FOR EVERY GARAGE

MODEL # 20TB

- Includes: Press Frame with a Manual Hydraulic Jack (BJ-20CT) and Safety Guard

MODEL # 20TAP

- Includes: Press Frame with an Air/Manual jack (SJ-40201TT) and Safety Guard

MODEL # 20TFSG

- 26"D x 72"L x 36"H



OPTIONAL
Parallel Bar set
for 20 Ton Press

MODEL # PB-1

Features

- 20 Ton capacity
- 90 PSI operating pressure
- Manual or air/manual control
- Safety bypass
- Bolted together for maximum strength
- Jack out-retracts when valve is released
- Press pins designed to lock in behind the bed
- 6-1/2" clear bed throat
- Return Springs mounted in board for safety
- Electrostatically coated and baked for a durable finish



HEAVY DUTY CANBUILT WORKBENCHES

- ERGONOMIC AND MODULAR, BOLT TOGETHER DESIGN
- 14 GAUGE STEEL, FOR HEAVY DUTY TASKS
- POWDER COATED FINISH FOR DURABILITY



shown with optional add-ons:
2 half shelves & drawer kit



AVAILABLE
WORKBENCH
WHEEL SET OF 4
MODEL # WB-WK
2 x WK-31 and
2 x WK31B



shown with optional
add-ons: 1 half shelf & drawer kit

HEAVY DUTY CANBUILT UTILITY CART

14 Gauge steel construction;
Shelf size 14" x 29"; 30" overall height



3 Shelf Utility Cart
MODEL # MC-3

MODELS STANDARD WALLMOUNT	DIMENSIONS D x L x H	OPTIONAL Half Bottom Shelf	OPTIONAL Drawer Kit
WB-1-48 WM-1-48	26" x 48" x 36"	WB-B-48 (12" x 48")	MODEL # WB-D 12"W x 23"D X 4"H
WB-1-60 WM-1-60	26" x 60" x 36"	WB-B-60 (12" x 60")	
WB-1-72 WM-1-72	26" x 72" x 36"	WB-B-72 (12" x 72")	

BENCH GRINDERS, VISES & DRILL

BENCH GRINDERS - SLIM LINE



8" Medium Duty

MODEL # **BG-890**

- Wheel Size: 8" x 3/4"
- Motor: 7 Amp, RPM: 3450

Eye Guard for BG-890

MODEL # **BG-880EG**



10" Heavy Duty

MODEL # **BG-1080**

- Wheel Size: 10" x 3/4"
- Motor: 14 Amp, RPM: 1720

Eye Guard for BG-1080

MODEL # **BG-1080EG**

BENCH GRINDER STANDS



MODEL # **GP-150**

- Cast iron with coolant reservoir
- 32 3/4" high
- For 6" to 8" grinders



MODEL # **GP-1**

- 32 1/2" high
- 7" x 8" top plate
- For 6" to 8" grinders

12" HD Bench

Grinder with Floor Stand

MODEL # **BG-1295HD**

- 1.5 HP direct drive motor
- 1,800 RPM
- 12" x 2" grinding wheels 36 grit and 60 grit



DRILL PRESS

17" Drill Press

Floor Model

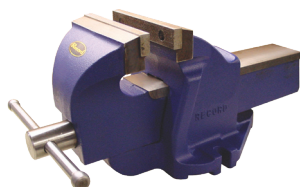
MODEL # **DPF-18FC**

- 1HP Motor
- Spindle with high quality bearings
- Cast iron pulleys reduce vibration
- 45° tilting table for angular drilling
- Locking depth stop
- 5/8" drill chuck
- 16 speeds (240-3400 RPM)
- 13 3/4" table size

(Light bulb not included)



SHOP VISES



HD fine casting, machined jaw and anvil

Record Mechanic's Vises

6" Fixed

MODEL # **VI-600**

- 8" full opening jaw

8" Fixed

MODEL # **VI-800**

- 9" full opening jaw

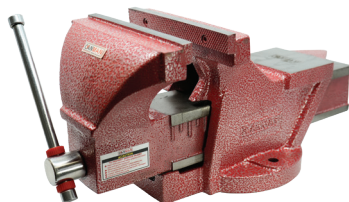


SGI steel casting, serrated hardened jaws and built-in anvil. Permanent pipe jaw included.

5" Mechanic's Vise

MODEL # **VI-5CAN**

- 5" full opening jaw
- 360 degree rotating head and swivel base



6" Fixed

MODEL # **VI-6CAN**

- 6" full opening jaw

8" Fixed

MODEL # **VI-8CAN**

- 8" full opening jaw

MULTI-FUNCTION LIFTING SYSTEM

THE CANBUILT ARM

Up to
1500
Lbs. Capacity

**AIR/MANUAL
DUAL CONTROL
HYDRAULIC**

MODEL # 5200

- Base model Includes Boom & Hook
- Weight: 240 lbs

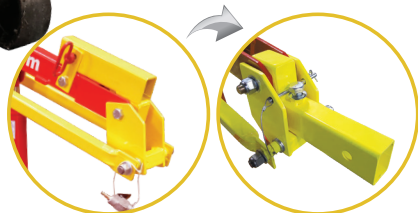
Quick Change
Flip-Over Tool Holder



**STANDARD
CRANE MODE**

QUICK CHANGE FLIP-OVER TOOL HOLDER

Once enabled and locked, the operator can switch from standard crane to Power Arm for parallel lifting. Also can use all the extra adapters for horizontal lifting in high and low modes as well as the articulation leveling platform.



Up to
800
Lbs. Capacity

PARALLEL LIFTING MODE

- For OVER/UNDER applications

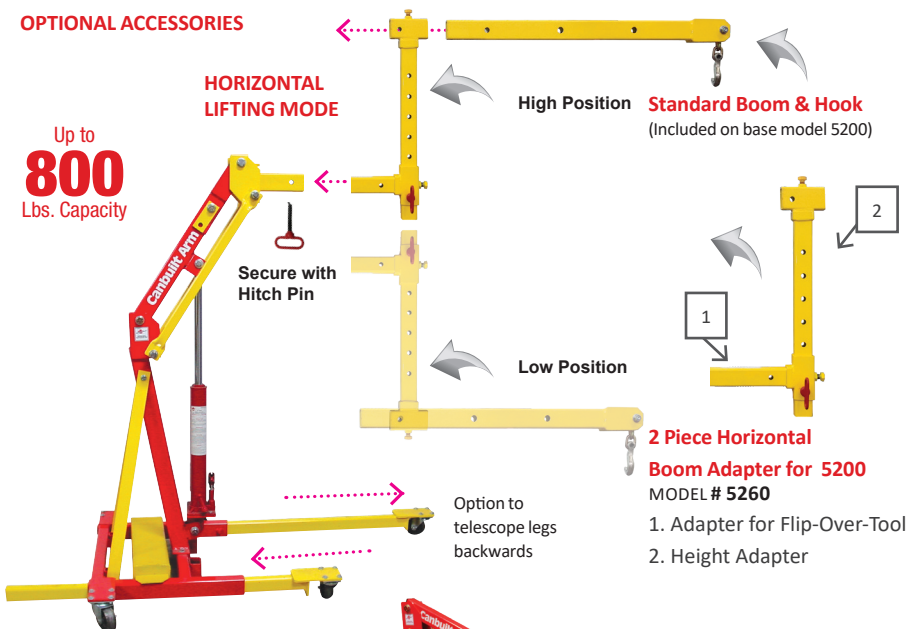


MULTI-FUNCTION LIFTING SYSTEM

OPTIONAL ACCESSORIES

Up to
800
Lbs. Capacity

HORIZONTAL LIFTING MODE



Counter Balance

MODEL # 5280

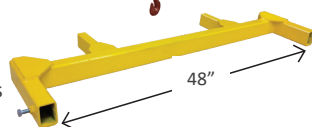
- 100 Lbs
- Use multiples for extra weight
- Works with all Canbuilt cranes, colour may vary

Skid Spreader

MODEL # 3200SSL

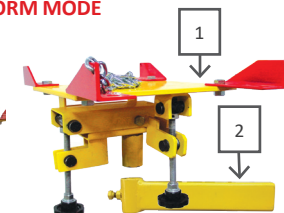
- Works with all Canbuilt cranes except Model # 4400P

Standard Boom & Hook (Included on base model 5200)



ARTICULATING LEVELING PLATFORM MODE

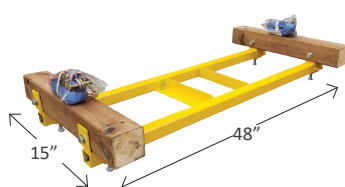
Up to
800
Lbs. Capacity



2 Piece Articulating Leveling Platform for 5200 (SPECIAL ORDER ONLY)

MODEL # 5250

1. Leveling Platform
2. Adapter for Flip-Over-Tool



Lift Platform Transaxle/Gas Tank Adapter for 5200

MODEL # LS-1000

- To be used in conjunction with Articulating Platform

HEAVY DUTY CRANES

A COMPACT AUTOMOTIVE CRANE WITH A BIG ATTITUDE

4200 AND 4200P

These cranes in manual or air/manual configuration, sit on a flow through base, a feature unique to all of our cranes. It allows the legs to be telescoped front to back thus enabling the use of counter balance.

Also, it can be enhanced with two optional 12" Mast Height Adapters for a total of 24" higher, bringing the mast height to 83" tall.



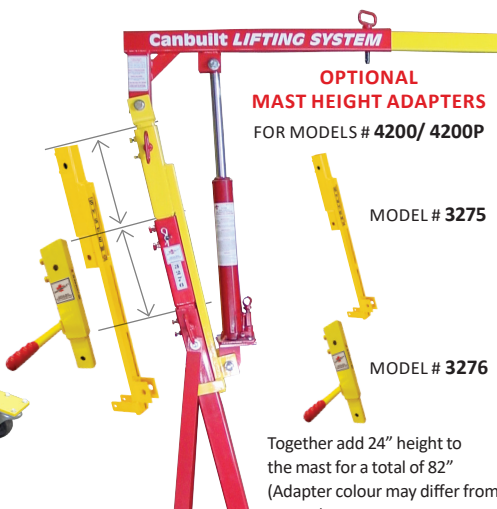
1

**1 Ton Capacity
Mobile Crane
MODEL # 4200P
AIR/MANUAL
HYDRAULIC**

**MODEL # 4200
MANUAL
HYDRAULIC**



Load up to 600 Lbs of counter balance on the back of the legs.
Counter balance Model # 5280 (100 Lbs each)



**OPTIONAL
MAST HEIGHT ADAPTERS
FOR MODELS # 4200/ 4200P**

MODEL # 3275

MODEL # 3276

Together add 24" height to the mast for a total of 82" (Adapter colour may differ from picture)

COMPACT FOR STORAGE



HEAVY DUTY CRANES



2

Ton Capacity

Industrial Mobile Crane

MODEL # 3900

MANUAL HYDRAULIC

MODEL # 3900P

AIR/MANUAL HYDRAULIC

3900 AND 3900P

Available in manual or air/ manual configuration. Can be enhanced with our Skid Spreader adapter Model # 3200SSL. Also can take advantage of counter weights, similarly to the 5200 and 4200 cranes.

A great crane for automotive and industrial applications.



All Canbuilt cranes feature a flow-through base that allows legs to telescope front & back



Up to

4,400

Lbs. Capacity

Heavy Duty Industrial Mobile Crane

MODEL # 4400P

AIR/MANUAL HYDRAULIC



MODEL	CAPACITY	OVERALL HEIGHT	BASE WIDTH	BASE LENGTH		REACH	BOOM HEIGHT	WEIGHT
				MIN	MAX			
4200/4200P	Up to 2000 Lbs	59"	41"	54"	71"	27" - 50"	0" - 99"	200 Lbs
3900/3900P	Up to 4000 Lbs	60"	41"	33"	71"	25" - 48"	0" - 101"	300 Lbs
4400P	Up to 4400 Lbs	75"	50"	46"	98"	32" - 60"	20 1/2" - 116"	950 Lbs

HEAVY DUTY SAFETY STANDS

with Pin Style Adjustment

SAFETY STANDS ARE CAPACITY RATED BY THE PAIR, AND MUST BE USED AS SUCH.



MODEL # 10TSH

MODEL # 10T



MODEL # FLS-0100



MODEL # FLS-0200



MODEL # 20TS



MODEL # 30TS



MODEL # 5000S



MODEL # TS-20



MODEL # 4000



MODEL # TS-21



SLIDER TOP OPTIONS



SADDLE TOP
It comes standard on all the stands



FLAT TOP
Available upon request for models: 20TS, 30TS, TS-20



SADDLE SCREW TOP
Standard on Model TS-21. Available upon request for TS-20



FLAT SCREW TOP
TS-20 and TS-21 Available upon request

IMPORTANT

FLANGE STYLE, OPEN BASE DESIGN Should be used on flat, solid surfaces only:
Models # 10TSH, 10T, 4000 and 5000S



Use additional support when supporting heavy, unknown loads or where ground tremors exist, due to blasting or nearby heavy equipment movement. Safety stands are **CAPACITY RATED BY THE PAIR** and for static loads only. Shock loads could weaken, damage or destroy the stands.

MODEL	CAPACITY PAIR	STAND DESIGN	HEIGHT		BASE DIMENSIONS	BASE STYLE	WEIGHT EACH
			LOW	HIGH			
10TSH	10 Ton	Low-profile	10"	16"	8" x 11"	Flange	18 Lbs
10T	10 Ton		15"	25"	11" x 13"	Flange	22 Lbs
FLS-0100	10 Ton	Low-profile	9 1/2"	16"	8" x 9 1/4"	Solid	17 Lbs
FLS-0200	20 Ton	Low-profile	10 1/2"	18 3/4"	12" x 12"	Solid	34 Lbs
4000	2 Ton	High Stand	58"	76"	11" x 13"	Flange	40 Lbs
5000S	10 Ton	Mid-height	26"	39"	11" x 13"	Flange	35 Lbs
20TS	20 Ton		16 1/2"	26 1/2"	12" x 12"	Solid	40 Lbs
30TS	30 Ton		16 1/2"	26 1/2"	12" x 12"	Solid	45 Lbs
TS-20	20 Ton	Trailer Mid	31"	51"	31" x 31"		120 Lbs
TS-21	20 Ton	Trailer High	51"	78"	34" x 34"		160 Lbs

TRANSMISSION JACKS

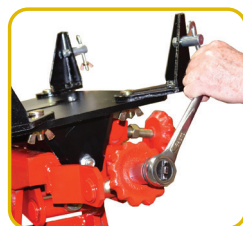
Heavy duty top of the line

3000

Lbs. Capacity

**Heavy Duty
Transmission Jack**

MODEL # TJ-425Y



Head Controls give a
ONE HAND precision
adjustment, Side to side
and front to back

1000

Lbs. Capacity

**TELESCOPIC
TRANSMISSION JACKS**



Air/Manual

MODEL # TJ-275Y



Manual

MODEL # TJ-200Y

MODEL	BASE DIMENSIONS	CAPACITY	LIFT RANGE		FWD	HEAD TILT		WEIGHT
			LOW	HIGH		REAR	LATERAL	
TJ-425Y	24" x 44"	3000 Lbs	7"	36"	30°	15°	12°	375 Lbs
TJ-200Y	34" x 36"	1000 Lbs	33"	69"	30°	15°	25°	160 Lbs
TJ-275Y	34" x 36"	1000 Lbs	36 5/8"	72 5/8"	30°	15°	15°	200 Lbs

HEAVY DUTY FLOOR JACKS

**SUPERIOR
LIFTING POWER
INSIDE EACH
JACK**



10

Ton Capacity

Manual Control

MODEL # SJ-20100Y

Air/Manual Control

MODEL # SJ-30100Y



15

Ton Capacity

Air Control

MODEL # SJ-30150YS



20

Ton Capacity

Air/Manual Control

MODEL # SJ-30200YM

MODEL	DESCRIPTION	CAPACITY TONS	LIFT RANGE			OVERALL CHASSIS			
			HIGH	LOW	LENGTH	WIDTH	HEIGHT	WEIGHT	
SJ-20100Y	MANUAL	10	22"	6 1/4"	61"	18"	10"	345 Lbs	
SJ-30100Y	AIR/HYDRAULIC	10	22"	6 1/4"	61"	18"	10"	345 Lbs	
SJ-30150YS	AIR/HYDRAULIC	15	25 1/2"	7"	68 1/2"	20"	9"	518 Lbs	
SJ-30200YM	AIR/HYDRAULIC	20	24"	7 1/2"	67"	20"	10"	507 Lbs	

SERVICE & FLOOR JACKS

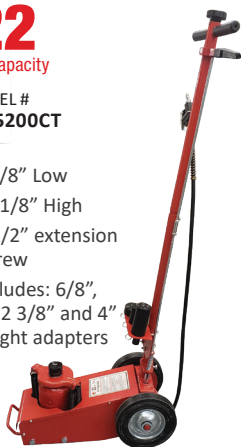
Standard Duty

22

Ton Capacity

MODEL #
SJ-25200CT

- 8 7/8" Low
- 17 1/8" High
- 3-1/2" extension screw
- Includes: 6/8", 1", 2 3/8" and 4" height adapters



Heavy Duty

22

Ton Capacity

MODEL #
SJ-25200S

- 9 3/4" Low
- 19 1/4" High



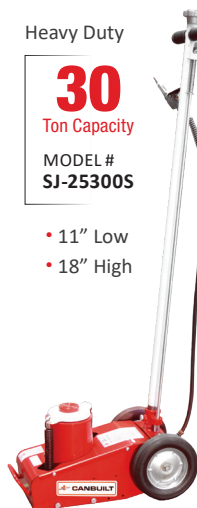
Heavy Duty

30

Ton Capacity

MODEL #
SJ-25300S

- 11" Low
- 18" High



Heavy Duty

50

Ton Capacity

MODEL #
SJ-25500S

- 12" Low
- 19" High



Two Sided Wheel Chock

MODEL # DC-515-002

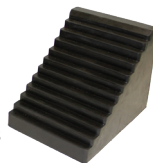
- 10"x8"x6" - 3.84 kgs



One Sided Jumbo Wheel Chock

MODEL # DC-515-003

- 9.5"x6.5"x7.5" - 6.2 kgs



3.5

Ton Capacity

Manual Control

MODEL # SJ-20350S



5

Ton Capacity

Manual Control

MODEL # SJ-20500Y

Air/Manual Control

MODEL # SJ-30500Y



MODEL	DESCRIPTION	CAPACITY TONS	LIFT RANGE		LENGTH	OVERALL CHASSIS		
			HIGH	LOW		WIDTH	HEIGHT	WEIGHT
SJ-20350S	MANUAL	3.5	21 5/8"	4"	30 7/8"	14 7/8"	7 1/4"	108 Lbs
SJ-20500Y	MANUAL	5	22 1/16"	5 7/8"	55 7/8"	14 3/4"	7 7/8"	243 Lbs
SJ-30500Y	AIR/HYDRAULIC	5	22 1/16"	5 7/8"	55 7/8"	14 3/4"	47 7/8"	253 lbs

DUAL WHEEL DOLLIES

DUAL WHEEL DOLLIES

For The Installation, Removal Of Dual Wheels From Trucks, Trailers And Buses



Canbuilt Dual Wheel Dolly

MODEL # 2100

- 3 1/4" low - 5" high
- 1500 capacity



1500
Lbs. Capacity



Canbuilt High Lift Wheel Dolly

MODEL # 2100HL

- 3 1/4" low - 19" high
- 1500 capacity

ENGINE STAND

Made in Canada, a favourite in the automotive industry and educational institution in their vocational training programs.



Canbuilt 4 Wheel Engine Stand Heavy Duty Commercial

MODEL # 1500

- Powder coated durable finish
- Bolt together design

Replacement wheel

Model # WK-31

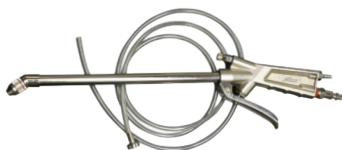
1500
Lbs. Capacity



Axle Drain Pan

MODEL # DC-30600

- Fits most 10-hole Super Single, Dual Disc Wheels, aluminum 22.5" and 24.5" 10-hole hub
- Catches oil and grease



Turbo Blo-Gun Engine Cleaner

MODEL # DC-S-184

- Air inlet: 1/4" NPT female (1/4" FNPT inlet thread size)
- 5' siphon liquid transfer tube
- 225 Max PSI



Ceramic Windshield Coating

Advanced Water Repellent

Forms a long-lasting, ultra-hydrophobic barrier that chemically bonds to glass, repelling rain sleet and snow for up to 1 year!

MODEL # DC-DTR289

- Single-Use package

MODEL # DC-DTR272

- Professional 10 Kits



One-Step™ Headlight Restoration Spray

Headlight Restoration Spray

Instantly restores oxidized headlights without the fuss. Simply spray on and watch your headlights regain their clarity!

MODEL # DC-DTR241

- Single-Use 3 oz / 85 g

MODEL # DC-DTR265

- Professional 10 oz / 283 g Restores up to 16 lenses

HEAVY DUTY BOTTLE JACKS

MANUAL BOTTLE JACKS



- Jacks designed for use in vertical, horizontal or angular position (pump to the underside of the reservoir)
- Deep grooved extension for added height

MODEL	CAPACITY	LOW	HIGH	WEIGHT
BJ-4CT	4 Ton	7"	13 3/4"	6 Lbs
BJ-6	6 Ton	8 1/2"	16 5/8"	11 Lbs
BJ-8	8 Ton	9 1/2"	18 5/8"	13 Lbs
BJ-12	12 Ton	10"	19 3/4"	18 Lbs
BJ-20CT	20 Ton	9 1/2"	17 3/4"	21 Lbs
BJ-30	30 Ton	9 1/2"	15 1/2"	65 Lbs
BJ-50	50 Ton	9 1/4"	15"	70 Lbs

RAMS



MODEL	HYDRAULIC	CAP.	CLOSED	OPEN
LSJ-8MCT	Manual	8 Ton	23 7/8"	42 3/4"
LSJ-8ACT	Air/Manual	8 Ton	24 1/4"	43 1/8"
LSJ-8M	Manual	8 Ton	24 1/8"	43 1/4"
LSJ-8A	Air/Manual	8 Ton	24 1/8"	43 1/4"



4 Ton Ram

MODEL # BSR-825S

10 Ton Ram

MODEL # BSR-1625S

DUAL CONTROL AIR/ MANUAL BOTTLE JACKS



- Dual control
- Screw adjustment for added height
- 90 – 120 PSI operating pressure

MODEL	CAP.	LOW	HIGH	HOSE LENGTH
SJ-40201TT	20 Ton	10 7/16"	20 1/16"	46"
SJ-40300S	30 Ton	11"	18"	46"

HYDRAULIC POWER PACKS



4 Ton Kit

MODEL # BSK-800CT

10 Ton Kit

MODEL # BSK-1600CT

HYDRAULIC PUMPS



Air Operated Treadle Pump

MODEL # BSA-1800CT

- Operating PSI- 10,000



Manual Hand Pump

MODEL # BSP-1650S

TIRE CHANGERS



Tire Changer Swing Arm Style

MODEL # TC-0328IT

SHOWN WITH OPTIONAL

Tecnoswing Arm & Roller Kit



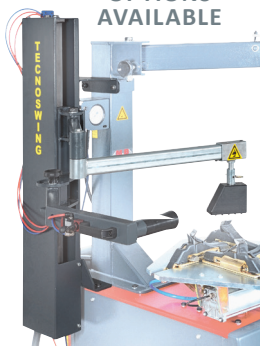
Optional Slide Guard Kit (Pkg 4)

MODEL # MB200589

For TC-0328, 0325, 0522, 0528IT



**OPTIONS
AVAILABLE**



**Tecnoswing Arm
& Roller Combo Kit**

MODEL # TC-0300TS

- Recommended for low profile and high performance tires

ACCESSORIES

**KIT MODEL #
MB199130**

2 of each,
Nylon protectors



**Front Duck Bill
Nylon Protection**

MODEL # MB200130



**Tail Side Duck Bill
Nylon Protection**

MODEL # MB200272



Lube Brush

MODEL # DC-30512



Lube Swab

MODEL # DC-30511

**TILT BACK STYLE
TIRE CHANGER**

MODEL # TC-0724IT

**Shown with optional
Tecnohelp & Helper
Group assist**

MODEL # TC-0550TH



Optional Slide Guard Kit (Pkg 4)

MODEL # MB022021

for TC-0724IT

MODEL	SPEED	WHEEL WIDTH	WHEEL DIAMETER	CLAMPING		HELPER ARM & ROLLER ARM KIT
				INSIDE	OUTSIDE	
TC-0328IT	2 Speed 10 - 17 RPM	3" - 16"	Up to 44"	10" - 28"	12" - 31"	Available
TC-0724IT	2 Speed 7 - 14 RPM	3" - 17"	Up to 46"	10" - 24"	12" - 27"	Available

Visit www.canbuilt.com for accessories or additional information

WHEEL BALANCERS

Digital Wheel Balancer with Automatic Gauge

MODEL # **WB-0330XL**

Features

- Automatic gauge for correct distance and diameter measurements and self-activation of the ideal balancing program (for clip-on or stick-on weights)
- Virtual Sonar acquires automatically the 3D width of iron rims, with the same performance of the traditional Sonar technology
- Innovative Auto-Adaptive software recalculates the acceptable unbalance value according to the weight and dimensions of each wheel
- New 40% more spacious and functional weight tray with surface increased by Intuitive and user-friendly interface to ease the operation
- Work optimization thanks to reduced balancing times
- Low rotation speed with subsequent power save
- Space-saving wheel guard
- Electric brake to lock the wheel and to ease the application of weights



Wheel Weight Tool
MODEL # **MB100152**
Available separately

Included:



MODEL	TYPE	TIRE WEIGHT	RIM WIDTH	RIM DIAMETER	WHEEL WIDTH	WHEEL DIA.
WB-0330XL	Automatic	Max. 165 Lbs	1.5" - 20"	10" - 30"	Max 20"	Max 40"



SUV Universal Spacers
MODEL # **MB300580**



MODEL # MB300581

- 4" & 5" Centering cones,
- fit 40mm O.D. flange (shaft)
- 2 SUV Universal spacers



Wheel Weight Tool
MODEL # **DC-35355**



Pressure Brake Bleeder & Fluid Drainer

MODEL # BFD-39560

The unit includes:

- Six connection caps for the brake fluid reservoir
- Set of drain containers with adapters



Connections Plugs

MODEL # BFD-39561



Cone 4"
4th Cone for Balancer
MODEL # MB300107



Truck Cone 5"
5th for Balancer
MODEL # MB300117



**Universal Adapter for
Brake Bleeder**
MODEL # **BFD-39580**

TIRE CHANGER ACCESSORIES

TIRE CHANGER OPTIONS



Duckbill Tower Assy
MODEL # MB201107



Optional Plastic Duckbill w/Metal Insert
MODEL # MB201370



Plastic Duckbill Head w/o Metal Insert
MODEL # MB201755



Helper Arm Push Pad Shoe
MODEL # MB201331



Turntable Jaw (Wedge)
MODEL # MB200254



LL Mounting Head Rear Protector
MODEL # MB201254



Nylon Bead Breaker Protector
MODEL # MB200215



Large Bead Pressing Roller for TC-5000
MODEL # MB201321



Plastic Jaw Inserts (4 PK) for MB 200254
MODEL # MB200242



LL Tower Tab Front Protector
MODEL # MB201198



Nylon Tire Lever Protector
MODEL # MB201359

Bead Pressing Roller for TC-0300TS/TC-0550TH
MODEL # MB200362



Plastic Protector for Chuck Pedestal
MODEL # MB201311



Tire Changer Motorcycle adapter (1 set of 4)
MODEL # MB200604



ATV Wheel Adapters for Tire Changer (1 set of 4)
MODEL # MB200606



Inflation Hose with locking clip
MODEL # MB100191

INFLATORS AND BLOWING GUNS



Digital Pistol Grip Inflator Gauge w/lock-On Chuck
MODEL # DC-S-568



Digital Pistol Grip Inflator Gauge
MODEL # DC-EX0500D



Analogue Pistol Grip Inflator Gauge
MODEL # DC-EX0500P



Truck Tire Inflator Gauge
MODEL # DC-553



Large Bore Inflator
MODEL # DC-556



Blo-Gun 4' Ext. w/Safety & Rubber Tip
MODEL # DC-159



Blo-Gun 2' Ext. w/Safety & Rubber Tip
MODEL # DC-158

PROFESSIONAL RUSTPROOFING



Wand Kit 4 pc set MODEL # **LRP-2152**



INCLUDED	PNEUMATIC AIRLESS				
	FOR PAIL: LRP-2000K	FOR KEG: LRP-2010K	FOR DRUM: LRP-2020K	FOR KEG: LRP-L033204K	FOR DRUM: LRP-L033205K
Pump 15:1 Ratio	LRP-L090001	LRP-L090003	LRP-L090004	LRP-L090004	
Advanced Application Gun	LRP-F1001			LRP-L032009	
25 ft twin Hose	RP-LRP25FT			LRP-L31078 (single hose)	
Dual Air Regulator Gauges w/ glass face	RP-LRPL011195			LRP-L090301 (air regulator)	
2" bung adapter for standard cover	RP-LRPL090053			RP-LRPL090053	
Dolly	N/A	DD-5159	DD-45	DD-5159	DD-45
Steel Cover	18527	18532	*Optional # 18525	18532	*Optional # 18525
Wand Accessories	LRP-2152			LRP-L033210	

Parts and accessories available separately. i.e. Various size spray tips
SEE BACK PAGE FOR NEW RUSTPROOFING ARRIVALS AND PARTS!



Complete System 10L Pot, Dual Regs, Gauges Hose and Gun
 MODEL # **LRP-L011080**



Gun Filter Kit, 5X W/Spring for L033-150, -210
 MODEL # **RP-LRPL032102**



Mesh Filter 100m for LRP-F1001
 MODEL # **RP-LRPL011906**



Professional Rustproofing Gun Kit, 1L Container and Z Swivel
 MODEL # **LRP-L015201**

GOJAK & RAKJAK LIFTING SYSTEM

3600 Lbs Gojak Air

MODEL # GOJ-GA3620

- Vehicle side lift in under 5 seconds!
- Smooth lifting and lowering Feather Air Control Valve
- Multiple grease fittings to ensure long life
- Solid Steel Wheels with Bronze Bushings



SUPER FAST LIFTING



3

TONS

Air Operated RAKJAK (Triple Bag)

MODEL # RJ-TB3 (EA)

- 6 7/8" low, 18" high

2

TONS

Air Operated RAKJAK

MODEL # RJ-DB2 (EA)

- 5 3/4" low 13 3/4" high (2 bag)
- MODEL # RJ-TB2 (EA)
- 6 7/8" low, 18" high (3 bag)

Retrofit Long Handle RAKJAK

MODEL # RJ-TBH

- Turns RakJak into a service jack



GOJAK SELF-LOADING DOLLIES



AUTOMOTIVE POSITIONING SYSTEM IDEAL FOR NEW CAR SHOWROOMS OR BODY SHOPS

- NON marking, NON marring
- FULL swivel industrial casters
- Precise ratcheting mechanism
- Full control for vehicle positioning



OPTIONAL
GoJak Storage Rack
MODEL # **GOJ-0456**



**Angled Ratchet Lever
Dolly for small aircraft**
4,100 Lbs

MODEL # **GOJ-4100 (EA) L/R**

- For tires to 7" wide
- 4,100 capacity with 4 units



6,300 Lbs GoJak

MODEL # **GOJ-6313 (EA) L/R**

- For tires to 13" wide
- 6,300 capacity with 4 units



7,000 Lbs GoJak
For SUV & Light Duty Trucks

MODEL # **GOJ-7016**

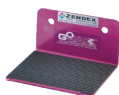
- For tires to 16" wide
- Max weight per tire 1,725 Lbs
- Max tire diameter 33"
- Casters (4) 3" H x 13/4" W Steel rollers
- Not recommended for rough surfaces
- 7,000 capacity with 4 units



5,200 Lbs GoJak

MODEL # **GOJ-5211 (EA) L/R**

- For tires to 11" wide
- 5,200 capacity with 4 units



GoJak Wall Bracket

MODEL # **GOJ-BKT (pair)**



4,500 Lbs GoJak

MODEL # **GOJ-4520 (EA)**

- For tires to 20" wide
- 4,500 capacity with 4 units



9,500 Lbs GoJak

Heavy Duty for EV vans, SUVs and trucks

MODEL # **GOJ-9516**

- For tires up to 16" wide. Capable of handling dual-rear tires
- Casters (4) 3"
- Not recommended for rough surfaces
- 9,500 capacity with 4 units

**Parts
available**

POWER SPORT LIFT

- RELIABLE & EASY TO USE
- FOR MOTORCYCLES, ATV'S AND SNOWMOBILES
- AIR POWERED WITH FOOT PEDAL CONTROL

High Rise Motorcycle ATV Lift Bench

MODEL # **ML-3500**

- Min Height 6 3/4"
- Max Height 38 1/2"
- Table Dimensions 88 1/2" x 31 1/2"
- Table w/side extensions 88 1/2" x 50"
- Weight 780 Lbs
- Mini Jack model # **ML-3000SJ** available 1000lbs capacity



1500
Lbs. Capacity

Motorcycle Lift

- Min Height 7"
- Max Height 30"
- Table Dimensions 84" x 24"
- Table w/side extensions 84" x 48"

1000
Lbs. Capacity



Available Configurations:



Air Operated Platform Lift, with no vise or extensions

MODEL # **ML-3000NV**



Air Operated Platform Lift, w/ Side Extensions & Wheel Vise

MODEL # **ML-3000CMT**

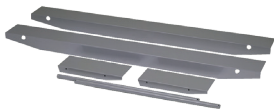


Air Operated Platform Lift includes vise

MODEL # **ML-3000**



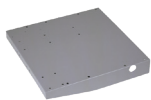
Optional Accessories



12" Side Extensions

MODEL # **ML-3000SE**

- Length 84"
- Width 12" each



Front Extension

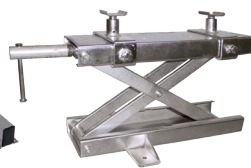
MODEL # **ML-3000FE**

- Adds 13" to Platform length



Front Wheel Vise

MODEL # **ML-3000VI**



Scissor-Frame Jack

MODEL # **ML-3000SJ**

- Mini Jack
- 1000 lbs capacity

MID-RISE VEHICLE LIFTS

Mid-Rise Scissor Lift

MODEL # VL-MRL648X

6000
Lbs. Capacity

Improved extension
arm length to 24"

NORTH AMERICAN HYDRAULICS!

Power unit approved to Canada's
electrical standards

SPECIFICATIONS

Lifting Capacity	6,000 Lbs
Overall Length	96 1/2"
Overall Width	39 5/8" - 62"
Lowered Height	4 3/4" Max Lifting
Height w/ Pads	48 1/2" Max Lifting
Height w/ Adapters	54"
Motor	1 HP/110V

Portable Mid-Rise Pad Lift

MODEL # VL-MRL638P

6000
Lbs. Capacity

EXCEPTIONAL VALUE:

- For tire, wheel, brake, collision repair or new car preparation

FEATURES:

- 6,000 lb. lift capacity w/ auto double safety lock system w/ air release
- Twin Hydraulic cylinders for maximum strength & stability
- 38" working height
- 4" drive-over height for approach of low vehicles
- Overall width 76 1/2", length 77"
- Motor 1 HP 110V
- Approved to Canada's electrical standards

- TWIN CYLINDER
- CLEAR WALK-THROUGH



Optional SUV Adapter Kit available

MODEL # VL-MRL638SUV

SAFETY INSPECTION TOOL PACKAGES



Headlight Aimer
easy lock / unlock
mechanism for height
adjustment



OPTIONAL
LASER ALIGNMENT VISOR
MODEL # OPT-5560

PANTHER AIMER ONLY
MODEL # OPT-5405

Aimer Protective Cover
MODEL # OPT-5500



OPTIONAL
LIGHT INTENSITY METER
MODEL # OPT-5555



Floor slope
adjustment knob

Floor slope
register

THE CANBUILT
PANTHER AIMER

Accurately aims all
head lamps, makes,
models & years,
including:
Xenon, HID and LED

**PERFORMS TO ALL
D.O.T. AND M.T.O.
REQUIRED
SPECIFICATIONS
IN CANADA**

Meets & exceeds
The SAE J600
International Standard

Floor Slope Laser Assy
MODEL # OPT-5550
Laser guided floor slope
measurement system

WHAT IS IN EACH SAFETY INSPECTION TOOL PACKAGE?

Includes	SI-PKG	SI-PKGPLUS	SI-PKGTR	SI-PKGTRPLUS
OPT-5405	✓	✓	✓	✓
OPT-5500	✓	✓	✓	✓
SI-660RG	✓	✓	✓	✓
SI-091DG	✓	✓	✓	✓
SI-105BJ	✓	✓	✓	✓
SI-658DC	✓	✓	-	-
SI-200TNT	-	✓	-	✓
SI-631DG	-	-	✓	✓

ALL PACKAGE ITEMS ARE AVAILABLE INDIVIDUALLY

OPTIONAL
ELUCIDATION FILTER
MODEL # OPT-5552



SAFETY INSPECTION / PRECISION

Digital Rotor Caliper

MODEL # SI-660RG

- LED display
- Inch/Metric/Fractional
- Measures brake rotors
- 3.5" long arms

Digital Ball Joint/Suspension/ Multi-Use Gauge

MODEL # SI-105BJ

- Range: 0 - 1"
- Graduation: .001"
- Inch/Metric/Fractional

Digital Tread Depth Gauge

MODEL #
SI-091DG

- Inch/Metric/
Fractional

Digital Brake Drum Caliper

MODEL # SI-658DC

- Range 6-20"
- Graduation : .0005"
- Inch/Metric/Fractional



Window Tint Meter

MODEL # SI-200TNT

- Compliant for roll-down & fixed glass
- Back-lit display for easy reading
- Low battery light indicator
- Powered by heavy duty 9 volt alkaline battery for dependable operation year round
- Easy access to battery slot
- Built to a N.I.S.T. traceable standard
- Auto shut off for longer battery life
- Ergonomic design, fits comfortably in your hand
- Most advanced meter on the market: precise and repeatable measurement
- Easy to use!



**OUR TINT METER
COMPLIES WITH
LEGISLATION IN
ALL PROVINCES
& STATES**



Wheels-On Digital Brake Drum Caliper

MODEL # SI-631DG

- Check drums without removing the wheel
- Range 0 - 16.65"
- Graduation: .005"
- Arm depth: 3 3/4" for ON vehicle, up to 6" OFF vehicle
- Inch/Metric Fractional

OPTIMIZE TRUCK INSPECTION TIME,
USING "WHEELS-ON" DIGITAL GAUGES
"WHEELS-ON" INSPECTION IS NOW
M.O.T. RECOGNIZED

Replacement Anvils for 631DG (set of 2)

MODEL #RP-SI631DGA

Wheels-On Digital Rotor Gauge

MODEL # SI-665RG

- Inch/Metric Fractional



INDUSTRIAL HEAVY DUTY PRESSES

Electric-Hydraulic

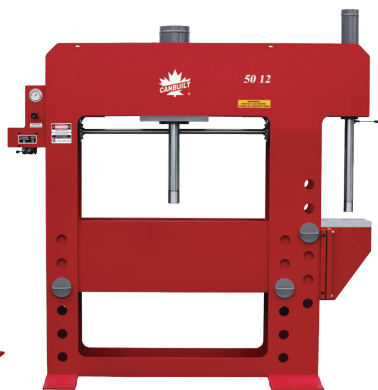


MODEL # EH-30T



MODEL # EH-100T

Shown with optional Safety Guard



MODEL # EH-50BP12STD

Also available with movable head:

MODEL # EH-50BP12WNH

H Frame Presses 30/50/100/200/250 TON

Standard Features on All Models

- Electric / Hydraulic operation, just add your start/stop switch
- Self-locking table design eliminates lateral movement
- Open sides to ease work on long pieces
- Flat ram nose, easily changed, to adapt the press to a specific job
- Quality Baldor motor, low speed pump, quiet and reliable
- Hydraulic power lift for table adjustment
- Double-acting cylinder allows pulling as well as pressing
- CSA approved

MODEL	POWER	BORE INCH	STROKE INCH	CAP. (TONS)	WEIGHT (LBS)
EH-30T	5HP 230 1 phase	5	16	30	1,400
EH-50T	5HP 230 1 phase	7	16	50	2,200
EH-100T	10HP 230 1 phase	8	12	100	3,000
EH-200T	10HP 575 3 phase	12	20	200	7,400
EH-250XW	20HP 575 3 phase	12	20	250	8,400
EH-50BP12STD	5HP 230 1 phase	7	16	50	2,900
		3	20	12	
EH-50BP12MNH	5HP 230 1 phase	7	16	50	3,100
		3	20	12	



1/4" FLR Trio

MODEL # DC-1100

3/8" FLR Trio

MODEL # DC-1101

1/2" FLR Trio

MODEL # DC-1102

Mounting Bracket for DC-1100 FLR

MODEL # DC-S-1163-1



ESSENTIAL FILTER/LUBRICATOR/REGULATORS (FLRS)

2 PIECE FLR	2 PIECE MINI FLR	2-IN-1
Model # FLR-238 3/8" NPT Filter, Lubricator, Regulator with Pressure Gauge	Model # FLR-014 1/4" NPT	Model # FLR-1559 1/4" NPT Water Filter, Regulator with Pressure Gauge
Model # FLR-212 1/2" NPT Filter, Lubricator, Regulator with Pressure Gauge		Model # FLR-1560 1/4" Filter, Reg Assy w/ drain, gauge & connections

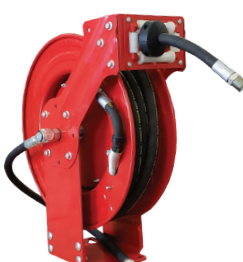
H.D. REELS & CONTROL HANDLES



FOR AIR/WATER
MODEL # **AR-5038**
MODEL # **AR-5012**



FOR OIL/LUBE
MODEL # **LR-5012**



FOR OIL/LUBE
MODEL # **LR-1475R**



FOR GREASE
MODEL # **GR-5014**

MODEL	AR-5038	AR-5012	LR-5012	LR-1475R	GR-5014
Application	Air/Water	Air/Water	Oil	Oil	Grease
Inlet/Outlet (NPT)	3/8"	1/2"	1/2"	1/2"	1/4"
Max Pressure	300 PSI	300 PSI	2,000 PSI	2500 PSI	5,000 PSI
Hose ID	3/8"	1/2"	1/2"	1/2"	1/4"
Hose Length	50'	50'	50'	32'	50'
Base Dimensions	9.5" L x 7" W	9.5" L x 7" W	9.5" L x 7" W		9.5" L x 7" W



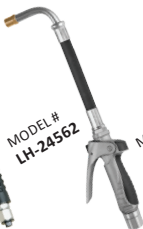
Hose stoppers available
MODEL # **134 5164**
3/8" and 1/2"



MODEL # **LH-24792**



MODEL # **LH-24675**



MODEL # **LH-24562**



MODEL # **DM-33502**



MODEL # **DM-24785**



MODEL # **DM-33522B**

MODEL	LH-24792	LH-24675	LH-24562	DM-33502	DM-24785	DM-33522B
Type	Mechanical	Manual		Digital Meter		Digital Preset Meter
Fluid	Low/high viscosity lubricants, ATF, antifreeze	Oils	Oil, anti-freeze	Oil only	Oil, antifreeze	Oil only
In/Out	1/2" BSP	1/2" NPT	1/2" BSP	1/2" NPT	1/2" NPT	1/2" BSP

BLO-GUNS



Safety Tip Kit
MODEL # **DC-S-174KIT**



Rubber Tip
MODEL # **DC-S-153**



Lever Hook
MODEL # **DC-S-148**



4" Blo-Gun
MODEL # **DC-S-164**



11" Blo-Gun
MODEL # **DC-S-167**

HEAVY DUTY COMPRESSORS

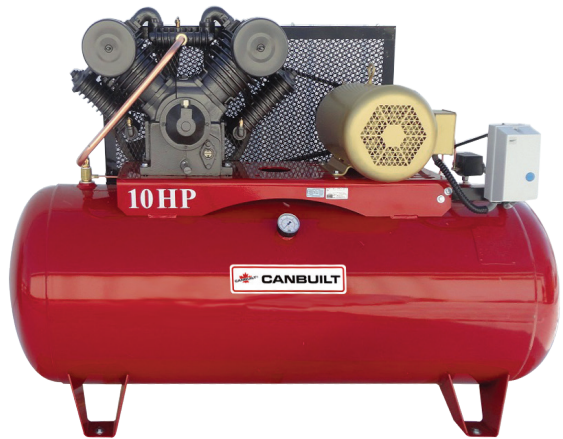
- QUIET OPERATION
- SERIOUS AIR VOLUME
- DURABILITY & RELIABILITY
- MADE IN CANADA

10 HP, 34 C.F.M. @ 150 PSI, 794 RPM

MODEL # C-10120H

Magnetic Starter /Auto Drain Included

- 575V / 3 Phase, 120 Gal. Tank
- V4 Cast Iron Pump
- Low RPM for longer working life
- Oil sight glass for easy monitoring of oil levels
- Industrial quality Baldor motor
- Weight: 900 Lbs



15 HP, 50.8 C.F.M @ 150 PSI, 800 RPM

MODEL # C-15120H

Magnetic Starter /Auto Drain Included

- 575V / 3 Phase
- 120 Gal. Tank
- V4, 2 Stage Cast Iron Head
- Baldor motor
- Weight: 1200 Lbs



Programmable Auto Drain 1/4" w/strainer ball valve 1/2", 115V

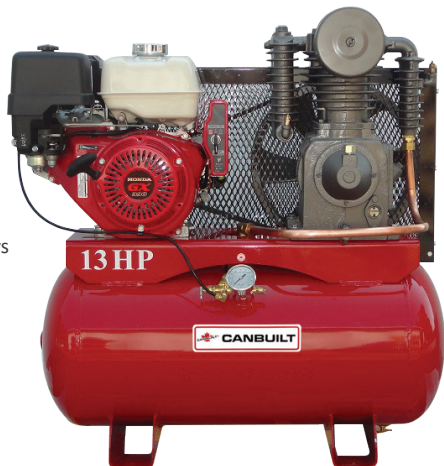
MODEL # C-AD14BV

13 HP, 24.5 C.F.M @ 150 PSI, 795 RPM

MODEL # C-1330HCICWC

Mobile unit, ideal for service trucks on highways and country roads.

- 30 Gal. tank
- 13 HP Honda Electric Start
- Centrifugal clutch included
- Low oil shut down sensor
- Sight glass for oil level checking
- Oil extension for easy oil changing
- Weight: 436 Lbs



HEAVY DUTY COMPRESSORS



ENTRY LEVEL 5 HP, 18.5 C.F.M @ 100 PSI, 1230 RPM

MODEL # **C-560V**

- 230v / 1 Phase
- 60 Gal. Tank
- 3 Cylinder
- Single Stage
- No magnetic starter required
- Motor with overload protection
- Weight: 280 Lbs



INDUSTRIAL AUTOMOTIVE

5 HP, 17.4 C.F.M.
@ 150 PSI, 794 RPM

MODEL # **C-IC580V**

**Includes Magnetic
Starter/Auto Drain**

- 230v / 1 Phase
- 80 Gal. Tank
- 2 Cylinder, 2 Stage
- Industrial quality motor with low RPM for longevity
- Weight: 635 Lbs



Additional models, sizes and voltages are
available. Ask us: canbuilt.com



HIGH PERFORMANCE INDUSTRIAL/AUTOMOTIVE

5 HP, 20.4 C.F.M @ 150 PSI,
455 RPM, Single Phase

MODEL # **C-HP580V**

Generally used in areas where
3 phase power is not available.

Magnetic Starter /Auto Drain Included

- 230V / 1 Phase
- 80 Gal. Tank
- V-4, 2 Stage
- Larger, V4 Cyl. Cast Iron Heads
- Weight: 635 Lbs

Also Available as Horizontal

MODEL # **C-HP580H**



Automatic Tank Drain

MODEL # **C-WV-1**



Air Dryer for Compressors

MODEL # **C-20U**

- 1 phase
- Easy to install
- 115 volts
- Removes 99.9% Of moisture

NOTE: A prefilter must be
installed before the air dryer;
minimum 5 microns,
Model# C-F15931A or
equivalent 1/2" NPT w/auto
drain.



Strongly recommended

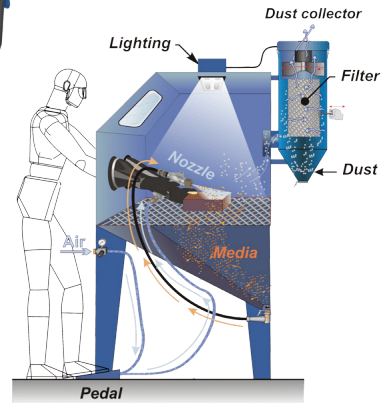
Use a moisture control on your air
lines as well as a filter, regulator,
lubricator.

See page 24 for available options

LIGHT INDUSTRIAL BLAST CABINETS



**MULTIPLE ACCESS POINTS
FOR EASIER HANDLING OF
LARGE PARTS**



LIGHT DUTY CABINET

Perfect for a small shop, a handyman, hobbyist or DIY type. It has features similar to bigger and more expensive cabinets

MODEL # BC-4200

Interior Dimension:
24"D x 48"W x 22"H

- Top/side load & access
- Foot Pedal Control
- Pressure regulator and gauge
- Cartridge type dust collector
- Neon interior lighting
- Air Required to operate:
20 CFM @ 80PSI



Air Reg & Gauge for BC-4200
MODEL # BC-415108

RECOMMENDED BLAST MEDIA

Glass Beads, 50 Lbs Bag

MODEL # BC-0400

- 30-40 (Medium-Coarse)

Garnet 80 Mesh, 55 lb bag

MODEL # BC-0700

- 80 (Medium-Coarse)

Aluminum Zirconia, 50 lb bag

MODEL # BC-0600

- 60 (Medium-Coarse)



**Complete Sandblast Gun
Only For BC-4200**
MODEL # BC-420010

DO NOT USE SAND, SILICA, CRUNCHED OR RECYCLED GLASS

BC-4200 ACCESSORIES ONLY

Replacement dust collector filter element

MODEL # BC-405100

Blast viewing window protection film (Pkg of 5)

MODEL # BC-415118

Replacement 1/4" ceramic nozzle MODEL # BC-905304

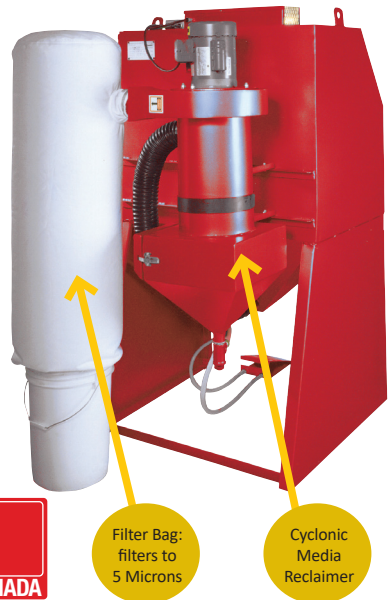
Replacement glass window for BC-4200

MODEL # BC-910298



Gloves (Pair) # 15. 7" x 23.62"
for BC-4200
MODEL # BC-415115

HEAVY DUTY BLAST CABINETS



Filter Bag:
filters to
5 Microns

Cyclonic
Media
Reclaimer

HEAVY DUTY BLAST CABINET W/ MEDIA RECLAIMER

MODEL # BC-3MR

- CSA approved
- Inside work area: 26"D x 36"W x 30"H
- Adjustable reclaimer to control media size
- Screen prevents large particles from causing clogging
- Flush construction minimizes media spill when the door is opened
- Operate with either foot using wide treadle control
- Dust collector features an energy-saving air-filtration system that captures 99% of all particles five (5) microns or larger



**RECYCLES MEDIA THROUGH THE
MEDIA RECLAIMER. REMOVES
DUST AND DEBRIS**

ACCESSORIES FOR LIGHT INDUSTRIAL AND HEAVY DUTY CABINETS

Plastic Window Protector (Pk of 25)

MODEL # BC-1220

Plastic Window Protector (Single)

MODEL # BC-1220-1

E3 Gloves, 8" x 30

MODEL # BC-603212

22" x 14" Glass window for Ecab Series Blast Cab

MODEL # BC-610205

5/16" Ceramic Nozzle for BC-26E

MODEL # BC-605001

5/16" Ceramic Nozzle for BC-3MR

MODEL # BC-605005

5/16" Blast Gun with Trigger

MODEL # BC-610101

Triggerless Blast Gun

MODEL # BC-610120

Dust Bag Replacement

MODEL # BC-601315



Dust Collector Unit

MODEL # BC-625016

- Shaker style requires minimal supervision and maintenance
- Modular and space saver
- Works with light industrial and HD cabinets

H.D. OIL & GEAR LUBE PUMP KITS



1:1 AIR OPERATED LUBE (OIL) PUMP KITS FOR 60L KEG AND 205L DRUM

Included: 1:1 Pump, control handle, hose, dolly for keg or drum and steel cover for pail or keg only. Ideal for straight transfer of light oils

KITS FOR KEG

w/ Manual Control Handle

MODEL # GLP-22705CH

w/ Digital Metered Control Handle

MODEL # GLP-22705DM

w/ Digital Preset Metered Handle

MODEL # GLP-22705DPM

KIT FOR PAIL

w/Manual Control Handle

MODEL # GLP-22700CH

3:1 AIR OPERATED GEAR LUBE PUMP KITS FOR 60L KEG AND 205L DRUM

Included: 3:1 Pump, control handle, hose, keg or drum dolly and steel cover, only for keg. Ideal for straight transfer of light oils

KITS FOR KEG

w/ Manual Control Handle

MODEL # GLP-22715CH

w/ Digital Metered Handle

MODEL # GLP-22715DM

w/ Digital Preset Metered Handle

MODEL # GLP-22715DPM

KITS FOR DRUM

w/ Manual Control Handle

MODEL # GLPD-22705CH

w/ Digital Metered Control Handle

MODEL # GLPD-22705DM

w/ Digital Preset Metered Handle

MODEL # GLPD-22705DPM

KITS FOR DRUM

w/ Manual Control Handle

MODEL # GLPD-22715CH

w/ Digital Metered Handle

MODEL # GLPD-22715DM

w/ Digital Preset Metered Handle

MODEL # GLPD-22715DPM

3:1 HD MOBILE LUBE (OIL) STATION KIT

Included: 3:1 Air operated pump, oil control handle, 10' delivery hose, 1/2" x 50' hose reel mounted on HD service truck

KITS FOR KEG

w/ Manual Control Handle

MODEL # LPCK-22715CH

w/ Digital Metered Control Handle

MODEL # LPCK-22715DM

w/ Digital Preset Control Handle

MODEL # LPCK-22715DPM

KITS FOR DRUM

w/ Manual Control Handle

MODEL # LPC-22715CH

w/ Digital Metered Control Handle

MODEL # LPC-22715DM

w/ Digital Preset Control Handle

MODEL # LPC-22715DPM



Air Operated Oil Pump with TAP

MODEL # LP-22705TAP

- Includes 1:1 Pump w/5GPM rate, 2" bung adapter. For oils only. Not for water based fluids

Drum Level Indicator Gauge

MODEL # DL-55

- Fits small 3/4" drum hole
- Suitable for oil, water, WWF, antifreeze, DEF and Diesel fuel



HEAVY DUTY GREASE PUMP KITS



60:1 HD MOBILE GREASE STATION KIT

Included: 60:1 Pump, Control handle, Z swivel, 1/4" high pressure grease hose, with 1/4" x 50' grease reel mounted on HD service truck, follower plate and lid cover

KIT FOR DRUM

MODEL # GPC-12210R

KIT FOR KEG

MODEL # GPC-12205R



60:1 HD COMPLETE GREASE PUMP KIT FOR 120LB/60L KEG AND 400LB/205L DRUM

Included: high pressure grease hose, 1/4" quick coupling, drum lid, Z swivel, grease control handle, follower plate, and dolly for keg or drum

HD Kit for 120 Lbs Keg w/10' grease hose

MODEL # GP-12205C
(no dolly)

MODEL # GP-12205K
(with dolly)

HD Kit for Drum w/10' grease hose

MODEL # GP-12210C
(no dolly)

MODEL # GP-12210K
(with dolly)



Kit pumps also sold separately



STANDARD DUTY GREASE PUMP KITS 55:1 PRESSURE RATIO

Kits Include: Pump GP-12540 for pail, or GP-12541 for keg, w/ bung adapter, control handle, Z swivel, grease hose 1/4", quick coupler, follower plate, cover for pail or keg and dolly for keg

Kit for Pail

MODEL # GP-12130C

Kit for Keg

MODEL # GP-12132

No dolly

MODEL # GP-12132K
With Dolly

55:1 Standard Duty Grease Pump Only for Pail

MODEL # GP-12540

- Total height 28"
- Downtube 20-5/64"

55:1 Standard Duty Grease Pump Only for Keg

MODEL # GP-12541

- Total height 36-1/2"
- Downtube 28-1/2"

Available Covers:

MODEL # 18527 for pail

MODEL # 18532 for keg

MODEL # 18525 for drum



HEAVY DUTY PUMPS



AIR OPERATED PUMPS

TYPE	1:1 FOR LIGHT OILS	3:1 FOR GEAR LUBE	5:1 FOR GEAR LUBE	15:1 FOR OIL	60:1 FOR GREASE
Stub	MODEL # LP-22800 For Pail/Wall Mount	MODEL # LP-22810 Wall Mount	MODEL # LP-22850 Wall Mount	MODEL # LP-22760	MODEL # GP-12751 For 120 Lbs Keg
Long	MODEL # LP-22805 For Drum	MODEL # LP-22815 For Drum	MODEL # LP-22852 For Drum	MODEL # LP-22762	MODEL # GP-12752 For 400 Lbs Drum

Note: Stub pump down tube, optionally available. Cut to length.

OIL SUCTION PUMP

1:1 Ratio, Suction and Waste Oil Pump

MODEL # SP-22802

- Speed regulated mechanism
- Creates high vacuum
- Closed system. No spillage. No body contact
- No waste oil collector needed
- Direct emptying from vehicles or Waste Oil Units
- 15 LPM @ 90 psi
- For non-corrosive fluids only



**Flexible NPT Outlet
Hose 95° with Auto
Tip 1/2"**

MODEL # FH-1415

**Flexible 1/2" BSP
Outlet Hose 95° with
Auto Tip**

MODEL # FH-1516

**RECOMMENDED WITH
ALL AIR OPERATED
PUMPS**

**2-in-1 Filter Regulator
w/ Pressure Gauge
1/4" NPT**

MODEL # FLR-1559



**OPTIONAL
RECOMMENDED**

**3/4" Stainless steel
Y-Strainer for Waste Oil
Pumps 3/4 In/Out**

MODEL # DP-3500Y

Filter screen should be used when pumping waste oil

Optional Drum Suction Kit for Stub Pump

Comes with foot valve, bung adapter and 8' flexible hose

MODEL # 28310



**14" Lube Hose 1/2"
NPT w/Manual Twist
Non Drip Tip**

MODEL # FH-1315



**Wall Mount Bracket
for Stub Pump**

MODEL # 28524



**Bracket 30mm for FLR
Units for Large Air Motors**

MODEL # 202 6154



**Air Hose, Pump to FLR
system**

MODEL # 222 6155

FLUID & GREASE PUMPS



1:1 HD FLUID KIT FOR 205L DRUM

Included: 1:1 corrosion protected pump, control handle, 10' delivery hose down tube and drum dolly

KITS FOR DRUM

w/ Standard Control Handle

MODEL # **FP-22720CH**

w/ Digital Metered Handle

MODEL # **FP-22720DM**



1:1 HD MOBILE (FLUID) STATION KIT FOR DRUM

Included: 1:1 corrosion protected pump, control handle, 6' lead hose, 1/2" x 50' hose reel mounted on HD service truck

w/ Standard Oil Control Handle

MODEL # **FPC-22725CH**

w/ Digital Meter Handle

MODEL # **FPC-22725DM**



FLUID PUMP FOR ANTIFREEZE/COOLANT

1:1 Ratio, Corrosion Protected, Stubby Pump Only

MODEL # **FP-22720**

1:1 Ratio, Corrosion Protected, Long Pump w/ Pick-up tube

MODEL # **FP-22725P**

Optional Replacement Hoses Available

HIGH VOLUME GREASE/LUBE PUMP

For BULK TRANSFER of "00" Grease.

IDEAL for bulk filling central lube systems

Included: Hose, telescopic suction tube and 2" standard bung adapter

Grease or Oil Pump for Pail

Includes Pail Cover

MODEL # **GP-21650P**

Grease or Oil Pump for 60 Litre Keg

Includes Keg Cover

MODEL # **GP-21650K**

Grease or Oil Pump for 45 Gal. Drum

MODEL # **GP-21650**

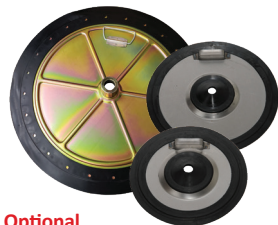


Optional Lid Covers for:

Pail: MODEL # **18527**

Keg: MODEL # **18532**

Drum: MODEL # **18525**



Optional

Follower Plates for:

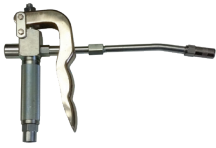
Pail: MODEL # **OR-18570**

Keg: MODEL # **OR-18571**

Keg: MODEL # **OR-18572**

Drum: MODEL # **OR-18575**

CONTROL HANDLES



GREASE CONTROL HANDLES

GH-17852	GH-14612	GH-99600	GH-17900D
Manual HANDLE WITH Z-SWIVEL & FLEXIBLE HOSE	Manual	Manual HANDLE WITH Z-SWIVEL & FLEXIBLE HOSE	Digital Grease Control Valve 1/4" NPT 8700psi

GREASE BEARING PACKERS



For Pail

MODEL # GP-3333



Heavy Duty for Pail

MODEL # GP-3330



Sealed Bearing Packer
- Needle 1/16" & 1 1/2" Long

MODEL # DC-ZE65

NEW

Pump & Bearing packer
for 120lb Keg Drums

MODEL # DC-ZE343



Manual Grease Pump

MODEL # GP-0550

- For 25-50 lb pail
- For light up to NLGI #2 grease
- 1/8" dia. by 6' hose length, coupler, carry handle, steel pail cover, and follower plate



Grease Gun Filler

MODEL # GP-0328

- For 35 Lbs. pail
- Pump, dust cap & follower plate included

MANUAL GREASE GUNS



Pistol Grip Style - 4,000PSI

MODEL # HG-1220



Pistol Grip Style - 6,000PSI

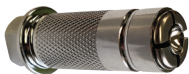
MODEL # DC-ZEHD5



Lever Action Style - 10,000PSI

MODEL # DC-ZEHD4

GREASE COUPLERS



HD Lock-on Grease Coupler to 15,000 PSI (No Valve)

MODEL # DC-UC-2121



HD Lock-on Grease CPLR w/Built in Relief Valve

MODEL # DC-UC-2020

SWIVELS FOR GREASE

1/4" x 1/4" Straight Swivel

MODEL # GH-18070



Universal Z-Swivel

MODEL # GH-18071

WHIP HOSES FOR GREASE



MODEL # WH-1260

12" 5,800 PSI 1/8" NPT

MODEL # WH-1261

16" 5,800 PSI w/Coupler



MANUAL PUMPS



38L/
100 Rev

3 Vane HD Rotary Hand Pump

MODEL # **FP-380**

- Inlet 1", Outlet 3/4"
- For medium viscosity oils, kerosene & diesel



25L/
100 Rev

Rotary Pumps Polyprop./Viton Seals

MODEL # **BP-900P**

- For washer fluid and antifreeze



Diaphragm Pump

MODEL # **FP-152**

- 76 L/100 Strokes
- For gas, diesel and most non-corrosive petroleum based fluids
- 22-39" suction tube
- 2 year warranty



Rotary Pump: Ryton Corrosion Resistant

MODEL # **DC-ZE1014R**

- For aggressive chemicals, chlorinated solvents, and hydrocarbons
- 1-gallon per 16 revs.
- Fits 2" bung on 15-55 gallon drums



Transfer Pump

MODEL # **BP-1241**

- For lubricants, solvents, ag. & ind. chemicals, additives & other non corrosive fluids



Polypropylene Pump

MODEL # **BP-490S**

- For lubricants, water based chemicals, WWF, Antifreeze
- Standard NPT bung



90L/100
strokes

Hand Fuel Pump

MODEL # **FP-920**

- Inlet 1" / Outlet: 3/4"
- For light viscosity oils, kerosene & diesel fuel



Non Drip Barrel Pump

MODEL # **BP-1242**

- 1 gal per 9 strokes
- Variable stroke
- Telescopic suction tube
- Light oils, ATF, gear lube, kerosene, diesel
- Not water based fluids

MANUAL GEAR OIL PUMPS

Both Units feature:

- HD standard steel pail cover
- Complete w/hose & nozzle



For 20L Pail

MODEL # **PP-3210**



For 60L Kegs

MODEL # **KP-3360**

OPTIONAL
Wheel Dolly for Keg

MODEL # **DD-5159**



PAIL PUMP

20L Pail Pump

MODEL # **BP-3520**

- Engine, Gear & Light Oil, Diesel, ATF, Antifreeze, Brake Fluid
- Plastic Bucket Pump w/ 48" Hose & steel spout fits 5 Gal. pails



Buttress Adapter 2" for Plastic Drums

MODEL # **BA-28235**

Fast-Flow Zinc Plated Pump (1 Gallon Per 8 Lifts)

MODEL # **DC-ZE10130**

- For soaps, waxes and other noncorrosive.
- Removable spout threaded for 3/4" garden hose fitting
- Fits a 2 inch bung on 15 to 55-gallon drums



FLUID TRANSFER PUMPS



DIAPHRAGM PUMPS FOR WASTE OIL

MODEL	IN/OUT	FLOW RATE	SOLIDS	OPERATING PRESSURE
DP-3700	3/4"	60 LPM/16GPM	1/8"	90-115psi
DP-4002	1"	90 LPM/24GPM	1/8"	90-115psi

3/4" Stainless Y Strainer

MODEL # **DP-3500Y**

- Highly Recommended for all waste oil pumps to prevent particulates from clogging or damaging the pump

NOTE:

A filter, lubricator, regulator is mandatory for peak performance and longevity of air motor pumps

See page 24 for available Filter
Regulator Lubricator models

DIESEL EXHAUST FLUID (DEF) PUMPS



MODEL # **DEF-12506**

- 12V / 180W
- ON/OFF power switch
- 6.6 GPM / 25LPM
- 1.5 Meter suction hose
- 6 Meter delivery hose
- Hose tails and clamps
- Includes manual nozzle

Manual DEF Handle

MODEL # **DEF-12507**



MODEL # **DEF-32V**

Manual Diesel Exhaust Pump

- Output 473 ml. per stroke
- 2 in. NPT bung adapter
- Telescoping suction tube
- Included: 3/4" hose outlet spout
- For oil, water based fluids, DEF, and agricultural chemicals



12V Diesel Transfer Pump 3/4"

MODEL # **DTP-4012V**

- 12V Self-Priming transfer pump
- 10GPM / 40LPM
- 6.5'/2 m suction hose
- 13'/4m delivery hose
- Hose tails and clamps
- Includes aluminum manual nozzle

Replacement Manual Nozzle for diesel

MODEL # **DTN-50L**

- Diesel & Kerosene

FLUID HANDLING & STORAGE



Fuel Transfer Tank
MODEL # **FT-5325HV**



HIGH VOLUME FUEL STORAGE AND TRANSFER TANKS

- 28 US Gal. capacity - Shipping weight: 60 Lbs.
- Shut off delivery valve
- Manufactured with UN/DOT approvals (UN3H1W) and recognized by TSSA
- Includes HD Pump

UN/DOT APPROVED EXPLOSION-PROOF TRANSFER PUMPS



12V x 20 gpm /Manual Handle
MODEL # **FTP-01220M**

- For Gasoline



Electric Pump for Pail
MODEL # **DC-20078**

- Includes pail lid, a.c. power adapter, hose and handle
- Used for: engine oil, DEF, hydraulic fluids, gasoline, diesel, AG chemicals, wwf, anti-freeze



OPTIONAL
12V DC Clips
Model #
DC-20008

Electric Pump for Drum
MODEL # **DC-20090**

- Includes AC 100~240V power adapter, hose and handle
- 33.5"(850mm)~49"(1245mm)
- For 55 gallon drum & IBC Totes
- Used for: Diesel, DEF(AdBlue), water, kerosene, mild detergents, antifreeze, agricultural chemicals, windshield washer fluid, motor oil, hydraulic oil, light oils (max 100cst)



12V/20 gpm/Automatic Handle
MODEL # **FTP-01225C**

- For Diesel
- 14' hose, 2" bung adaptor
- Mounts to either tank or drum



1" Mechanical In-Line Meter for Diesel
MODEL # **FRM-807-1**

- Max operating pressure: 50 PSI
- Accurate to $\pm 1\%$
- Flow Rate: 5-32GPM/20-120LPM

FUEL NOZZLES



3/4" x 3/4"
Automatic - Gasoline
MODEL # **FTH-1541**

3/4" x 1"
Automatic - Gasoline
MODEL # **FTH-1542**



3/4" x 3/4" Manual Utility Fuel Nozzle
MODEL # **FTH-100**



1" x 1"
Automatic - Diesel
MODEL # **FTH-1544**

WASTE FLUID HANDLING

FOR CARS, TRUCKS OR FARM VEHICLES, TAKE YOUR PICK



Mobile Air Operated Waste Oil Drain

MODEL # DR-290

- 90L/24 Gal. Capacity
- 18L/4.8 Gal. Bowl capacity
- 76.8" Max. Height
- 1/4" NPT female air inlet



2-in-1 Cantilever Waste Oil Drainer & Changer

MODEL # DR-290CAN

- 90L/24 Gal. Capacity
- 100-115 PSI Air pressure for vacuum
- 61" Max. - 43.3" Min. Height
- ideal for higher clearance vehicles and farm equipment.



2-in-1 Waste Oil Drain & Changer w/ Vacuum Chamber

MODEL # DR-290VAC

- 90L/24 Gal. Capacity
- 10L Vacuum chamber capacity
- 100-115 PSI Air pressure for vacuum
- 150-180 Secs. depressurization
- 6.5' Suction hose
- 70.8" Max. - 43.3" Min. Height



Funnel Extension Replacement

MODEL # DR-290FE

For DR-290 & VAC

30L Air Operated Suction Oil Changer

MODEL # DR-130

- 30L/8 Gal. Capacity
- 100-115 PSI work pressure
- 6.5' Suction hose
- 1/4" NPT female air inlet
- 33lbs. Weight
- 6 probes, 2 adapters for Mercedes, BMW, Volkswagen



Pressurized Mobile Oil Dispenser w/ Funnel

MODEL # DI-230

- 30L/8 Gal. Capacity
- 145 PSI working pressure
- 6.5' Flexible hose
- 1/4" NPT female air inlet
- 33lbs. Weight
- Funnel extension included: DR-290FE



WASTE FLUID HANDLING

Polypropylene Oil Drain Wagon (only)

MODEL # **DR-037**

- Easily rolls under larger vehicles to contain oil, antifreeze etc.
- Does Not rust

Drain Wagon and Evac Kit, Complete.

MODEL # **DR-037CP**

- Includes DR-037 and DR-037PK



Port Side: 3/4"



Evacuation Kit (pump only)

MODEL # **DR-037PK**

- 115 volts
- 6 GPM

Impeller Replacement Kit for DR-037PK

MODEL # **RP-DR-037EK**



2" Poly Drain Valve

MODEL # **DV-6700**



3/4" Drum Faucet

MODEL # **DF-100**



2" Cast Iron Bung Faucet

MODEL # **DC-ZE64**

Funnel w/Screen and 14" Flex Metal Spot

MODEL # **DC-ZE86**

- 6-inch Diameter
- 14-inch Flexible spout
- Includes a brass screen mesh
- Capacity: 1 quart
- Outlet ID: 7/16 inch



5L Plastic Measure Flexible Spout

MODEL # **PM-5000**



3 Pack Non Sparking Drum Wrench

MODEL # **DW-45-3**

- For 3/4" and 2" drum bung

Steel Oil Drain Wagon - 18 Gal. Cap.

MODEL # **DR-270**

- Side port 1/2" (can be retrofitted to use the Evacuation Kit DR-037PK)
- Top port 3/8"
- Heavy duty Steel splash screen
- 8" height x 25 1/2" width x 47 1/2" length



Low-Profile Oil Drain Wagon - 70L Capacity

MODEL # **DR-015**

- Heavy duty steel splash screen
- 49 3/16" length x 32-1/2" width x 3-3/8" height
- For engine oil, gear boxes and differentials of all vehicles. (NOT for acidic, alkaline and corrosive liquids.)



TRUCKS & DOLLIES

DRUM SERVICE TRUCK

45 Gal. Canbuilt Drum Service Truck

MODEL # **DT-250**

For transporting and dispensing drums

- 600 Lbs. Capacity
- 2 Locking Rear Wheels
- 2 H.D. 8" Front Wheels



Canbuilt Keg Service Truck w/DD-5159

MODEL # **DT-251**



HYDRAULIC PALLET TRUCK

Standard Pallet Truck

MODEL # **PT-5500E**

- HD Steel Centered Wheels, Polyurethane tread
- 2.9" Fork low
- 7 3/4" Fork high
- 27"W x 48"L forks
- 5500 Lbs. Capacity



HEAVY DUTY DRUM & HAND TRUCKS



1000 Lbs Capacity Drum Truck

MODEL # **DT-100**

- 10" Solid rubber wheels



1000 Lbs Capacity Self Standing Easy Tip Drum Truck

MODEL # **DT-101**

- 10" Solid rubber wheels



8" Hard Tread Wheels

MODEL # **HC-3**

- 600 Lbs. Capacity
- 5/8 shaft
- All steel welded
- HD Tubing for strength



10" Pneumatic Wheels

MODEL # **HC-4**

- 600 Lbs. Capacity
- 5/8 shaft

DRUM DOLLIES



Canbuilt 60L/16Gal. Keg Dolly 14 1/2" Diameter

MODEL # **DD-5159**

- All steel construction

Replacement Wheel

MODEL # **WK-14**



Canbuilt 205L/54Gal. Drum Dolly 23" Diameter

MODEL # **DD-45**

- All steel construction

Replacement Wheel

MODEL # **WK-361**



Drum Tip Over Stand

MODEL # **45RKD**

- 600 Lbs. capacity
- For easy drum manipulation
- Roll over allows dispensing from drum
- Knock Down Version

ROLLING LADDERS, CARTS & TRUCKS

ROLLING LADDERS

- Exceed CSA Safety standards as per ANSI AA14.7 and OSHA 1910.27
- Spring loaded wheels
- HD Tubing for strength
- Non-skid steps & platform
- Floor locking mechanism
- 400 Lbs. Capacity



2 Step

MODEL # **RL2NH**

- No Handrail



3 Step

MODEL # **RL3NH**

- No Handrail



4 Step

MODEL # **RL4NH**

- No Handrail



5 Step

MODEL # **RL5NH**

- No Handrail

MODEL # **RL5H**

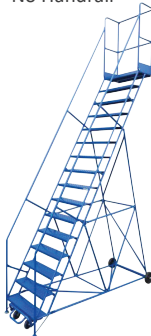
- With Handrail



10 Step

MODEL # **RL10H**

- With Handrail

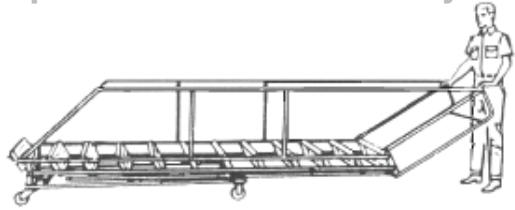


16 Step

MODEL # **RL16H**

- With Handrail

Available ladders from 2 up-to 20 steps. Also, gated walk-through options. Ask us for availability



Units 8 Step and up can be folded for storage or shipping

GAS CYLINDER TRUCKS



8" Wheels

MODEL # **GT-8SR**

- 200 Lbs. Capacity



8" Wheels

MODEL # **GT-080KD**

- * Knocked down.
- Some assembly required



8" Wheels

MODEL # **GT-100KD**

- * Knocked down.
- Some assembly required



14" Wheels

MODEL # **GT-141**

- * Knocked down
- Some assembly required

WELDING TOOLS & ACCESSORIES



WELDING KITS - PROFESSIONAL SERIES

Welding capacity up to 1/2" and Cutting up to 5" w/tip size 4 on both Styles

Metal Master Cutting Torch Kit Harris Style

MODEL # **MMTK-900H**

Metal Master Cutting Torch Kit Victor Style

MODEL# **MMTK-900V**

OXY/ACETYLENE CUTTING TIPS

HARRIS STYLE MODEL #	VICTOR STYLE MODEL #	TIP SIZE
CTH-6290-0	CTV-0-1-101	0
CTH-6290-1	CTV-1-1-101	1
CTH-6290-2	CTV-2-1-101	2
CTH-6290-3	CTV-3-1-101	3
CTH-6290-4	CTV-4-1-100	4

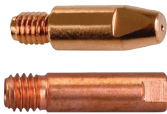
PROP/NG CUTTING TIPS

HARRIS STYLE MODEL #	VICTOR STYLE MODEL #	Tip Size
CTH-6290-0NX	CTV-0-GPN	0
CTH-6290-1NX	CTV-1-GPN	1
CTH-6290-2NX	CTV-2-GPN	2
CTH-6290-3NX	CTV-3-GPN	3
CTH-6290-4NX	CTV-4-GPN	4



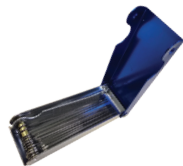
MIG TIPS

MODEL #	CONTACT TIPS SIZES
MT-1527-06	Mig Tip (5 pkg) (.024)
MT-1527-08	Mig Tip (5 pkg) (.030)
MT-1527-09	Mig Tip (5 pkg) (.035)
MT-2504-06	Mig Tip (5 pkg) (.024 M6 ECU)
MT-2504-08	Contact Tip (5pkg.) .030 M6 ECU
MT-2504-09	Contact Tip (5 pkg.) .035 M6 ECU
MT-2504-10	Contact Tip (5 pkg.) .040 M6 ECU



MIG WIRE - MILD STEEL

MW-6091	(0.9mm) (1kg Spool)
MW-6095	(.9mm) (5kg Spool)



Tip Cleaners

MODEL # **TC-1**



MODEL # **WG-PW1003**



MODEL # **WG-PW4000L**

MODEL # **WG-PW4000XL**



Magnifying Lens

MODEL # **LM-175**

- 2" x 4 1/4"
- Diopter 1.75 Mag-175
- Other magnifications available



Cylinder Adapter #61 for 300-510 Acetylene Tanks

MODEL # **MMTK-WES61**

WELDING CARTS & GARAGE TOOLS

MIG WELDING CARTS



MODEL # **GT-290**

- Top Shelf Dimensions: 12.5" W x 22.5" L
- Overall Cart Dimensions: 18.5" W x 26.5" H
- Weight Capacity: 110 lbs



MODEL # **GT-280**

- Overall Height: 33 1/2" (Handle end)
- 24 3/4" (Rear end)
- Overall Width: 14 1/2" (including wheels)



WELDING HOSE REELS

MODEL # **WR-1809**

- 50' Retractable Twin Welding Hose Reel

MODEL # **WR-1825**

- 100' Hose Reel for Welding Gas

Heat Gun Kit

MODEL # **HG-1150**

- Powerful 1,500 Watt motor
- Dual power settings
- Ideal for paint, varnish, lacquer and label removal, thawing or drying, forming and welding plastics, softening caulking and putty, heat shrinking plastics, soldering pipes or loosening joints and screws
- Built-in thermal protector prevents overheating
- Double insulation



Tire Test Tank

MODEL # **TR-3414**

- Outside : 34" L x 14" W x 14 3/4"
- Inside : 31 1/2" L x 14" W x 12"

Stand Only

MODEL # **TR-3414S**

Upsize Tire Test Tank

MODEL # **TR-3444**

- Outside : 37 3/4" L x 18" W x 17 1/4"
- Inside : 35" L x 15 1/4" W x 16 1/2"

Dealer Plate Holder (Package of 6)

MODEL # **DPH-100-6**



"Leakfinder" Smoke Machine

MODEL # **EVP-WV608**



Smoke Solution w/ Dye

MODEL # **EVP-0712UV**

Smoke Solution w/o Dye

MODEL # **EVP-0716**

BODY SHOP EQUIPMENT



Vac Blaster w/ Media Reclaimer

MODEL # BV-700

- Removes dust & re-circulates media
- Power: 110-120v standard
- Air pressure and vol: 75-160 psi, 8-22 cfm
- Hose length: 8.5' (2.5M)
- Aluminum Oxide suggested. Glass beads, metal shot, nut shells can also be used

Applications

- Glass Etching: identification marks, artwork, etc
- Efficiently removes rust, paint, corrosion, and graffiti from metal, concrete, and stone with no heat, surface distortion, or dust



Glass Beads, 50 Lbs Bag

MODEL # BC-0400

- 30-40 (Medium-Coarse)

Glass Beads, 50 lbs Bag

MODEL # BC-0300

- 20-30 (Medium-Coarse)



Pressure Blaster

MODEL # BC-601100

- Ideal sandblasting unit for light maintenance jobs on machinery and on the road. Equipped with a 3/8" piping, and an 80 lb. tank capacity
- Very light (45 lb.) Operates on low power requirements (5 hp)
- Ceramic nozzle 1/8", 8' blasting hose 3/8" diameter



Replacement Nozzle 1/8" Ceramic

MODEL # PB-100260



Aluminum Oxide 50 lb Bag

MODEL # BC-0600

- 60 (Medium-Coarse), Brown
- Sold by the bag

Aluminium Oxide 50 lb Bag For Media Reclaimer's Only

MODEL # BC-0360

- 30-35 (Medium-Coarse)



Pressure Blaster

MODEL # PB-100

- For removing dirt and rust
- Abrasive flow control and air inlet shut off valves
- Heavy steel grit or shot
- Blasting sand
- Heavy duty 4 ply hose
- 100 Lbs. media capacity, 8' hose
- Ceramic nozzle w/safety shut off



Safety Shut Off control nozzle for PB-100

MODEL # PB-1005000S

- Includes ceramic nozzle



Garnet 30-60 Mesh, 55 lb bag

MODEL # BC-0650

Garnet 80 Mesh, 55 lb bag

MODEL # BC-0700

Garnet 120 Mesh, 55 lb bag

MODEL # BC-0120

Garnet 220 Mesh, 55 lb bag

MODEL # BC-0220

PARTS WASHERS

SOLVENT PARTS WASHERS



Large Capacity Tanks, Made With Heavy Gauge Steel

Both models feature:

- Fire safety lids
- Powder coated finish
- 16 and 18 gauge steel body
- A flexible metal hose
- A Flo-Thru brush
- A CSA approved Electric Pump
- A parts tray with drain holes to prevent loss of small parts



Parts Washer w/5 Gal. Pail Cover

MODEL # **PW-3000**

- Cleaning area: 31" x 16" x 11"
- Overall size: 32" x 17" x 40"



HD Parts Washer w/10 Gal. Solvent tank & cover

MODEL # **PW-3900**

- Cleaning area: 37" x 19" x 11"
- Overall size: 38" x 20" x 40"

Optional Liner Bags for 10 gal Solvent tank for PW-3900 - PKG of 10

MODEL # **PW-50BAGS**

REPLACEMENT PARTS



Flo-Thru Brush

MODEL # **PWB-150**



Parts Washer Pump

MODEL # **PWP-P37**



Flex Hose Spout

MODEL # **PWS-2100**



Fusible Link

MODEL # **FBL-160**

30" x 3/4" Plastic Tube for Parts Washers

MODEL # **PWS-2200PT**

AUTOMATIC SPRAY GUN CLEANER (SPECIAL ORDER ITEMS)

Clean your spray guns fast, reduce solvent consumption and save money while helping to eliminate:

- Pollution in your shop
- Hazardous waste disposal problems
- Irritating skin conditions caused by handling solvents
- Continuous solvent consumption
- Wasted time, manual cleaning

MODEL # **SPG-1100**

- Cleans 1 gun, 1 pot per cycle
- Overall dimensions 14.3"W x 13.6"D x 40.6"H



MODEL # **SPG-1100**

FILTER CRUSHER

FOR STANDARD FILTERS

4 Ton Capacity Filter Crusher

MODEL # **FC-0600**

- Air pressure 120 PSI
- Air cylinder dia. 9.84"
- Max filter height 9.8"
- Max filter dia. 8.5
- Filter crusher depth 15"
- Filter crusher height 39"



WHEELS

INDEX

REPLACEMENT WHEELS



10" Pneumatic

MODEL # **RWK-10**

- Sold as set of 2
- 10" x 5/8" hub
- 3/4" also available



8" Hard Tread

MODEL # **RWK-8**

- Sold as set of 2
- 8" x 3/4" hub



6" Swivel Crown Tread Cast Iron No Brake

MODEL # **WK-6NB**



6" Swivel Crown Tread Cast Iron w/ Brake

MODEL # **WK-6BRK**



5" Swivel Caster w/ Posilock for DT-250

MODEL # **WK-5SPL**



4" Swiv. Steel w/dust shield

MODEL # **WKS-14**



3" Flat Top Swivel Poly Wheel (for DD-45)

MODEL # **WK-361**



3" Swivel 1/2" Stem Caster w/lock

MODEL # **WK-31B**



3" Swivel Stem Type Caster Wheels

MODEL # **WK-31**



3" Stem Caster (80 lb.cap)

MODEL # **WK-14**

HOSES

6" Lead Lube Hose 1/2" for LPC-22715, FP-22720

MODEL # **H-12006**

6" Oil Hose 1/2" Male NPT x 1/2" Male NPT Swivel

MODEL # **H-12006S**

10" Oil Hose 1/2" Male NPT x 1/2" Male NPT Swivel

MODEL # **H-12010**

6ft Lead Hose 1/4" for GPC-12210R 90 Degree

MODEL # **H-14206**

20FT DEF Hose

MODEL # **H-12506**



1/4"x10' BSP High Pressure Grease Hose, F/Swivel

MODEL # **H-14210**

1/4"x10' NPT Grease Hose w/ 1/4" x 1/4" Adapter

MODEL # **H-14210S**

A

Abrasive (Blast) Media	28, 44
Air Compressors	26, 27
Air Dryer	27
Air Diaphragm Pumps	36
Air Blow Guns	9, 16, 25
Air Pumps (Oil & Grease)	30-33
Air Pump Accessories	32
Auto Drains for Compressors	26-27
Axle Drain Pan	12

B

Bench Grinders & Stands	3
Blast Cabinets	28-29
Blow-Guns	12, 25
Bottle Jacks	13
Brake Bleeder	15
Brake Drum Handler	BP
Brake Pad Gauge (Manual)	BP

C

Carts	2, 43
Caster Wheels	46
Compressors	26, 27
Control Handles	25, 34, 37, BP
Cranes & Accessories	4-7
Cutting Torch Kits	42

D

Dealer Plate Holders	43
DEF & Diaphragm Pumps	35-37
Digital Gauges	23, BP
Diesel Transfer Pump	36
Dollies	12, 19, 40
Drain Valves	39
Drill Press	3
Drum Level Indicator	30
Drum Trucks	40
Drum Tip Over Stand	40
Drum Wrench	39
Dust Collector	29

E

Electric-Hydraulic Presses	24
Electric Pumps	36, 37, 39, 45
Engine Stand	12
Evacuation Kit (Waste Oil)	39, BP

INDEX

F

Faucets & Measures	39
Filter, Reg., Lubricators	24, 27, 32
Filter Crusher	45
Floor Jacks	10, 11, 18
Fluid Handling & Storage	37-39
Fluid Pumps	33, 36, 37
Follower Plates	33
Foot Pump	13
Fuel Caddies & Pumps	36, 37
Fuel Nozzles	37
Fuel Transfer Pumps	36, 37
Funnel with Screen	39

G

Gas Cylinder Trucks	41
Gear Oil Pumps (Manual)	35
Grease Couplers	34
Grease Pumps & Kits	31, 33
Grease Guns, Bearing Packers	34
GoJax Car Dollies	19

H

Hand Pumps	35-36
Hand Trucks	40, 41
Headlight Aimer	22
Headlight Restoration Spray	12, BP
Heat Gun	43
HD Hose Reels & Hoses	25, 43, 46
Hydraulic Power Packs	13

I

Inflators & Inflator Gauges	16
-----------------------------	----

J

Jacks (HD)	9-11, 13, 18
------------	--------------

L

Leak-finder Detector Machine	43
Lever Style Pumps	33, 35, 36
Lid Covers	31, 33
Long Rams	13
Lube Brush/Swab	14
Lubrication	32- 33

M

Manual Pumps	13, 33-36
Mechanical Meter (Diesel)	37
Metal Cutting Torch Kits	42
Mig Welding Carts	43
Mobile Lube, Grease, fluid Kits	30, 31, 33
Motor Stand	12
Motorcycle, ATV Lift	20

N

Nozzles (for Fuel)	37
--------------------	----

O

Oil Drains (HD) & Wagon	38, 39, BP
Oil Pumps & Kits	30, 32
Oil "Y" Strainers	32

P

Pallet Truck	40
Parts Washer & Parts	45
Pistol Grease Guns	34
Plastic Measures	39
Pneumatic Jacks	18
Portable Suction Drain	38, BP
Presses (HD)	2, 24
Pressure Blaster	44

R

RakJak Air Bag Lift	18
Rams	13
Retractable Reels	25, 43
Rolling Ladders	41
Rotary Pumps	35, 37
Rustproofing Kits	17

S

Safety Inspection Packages	22, 23
Safety Stands	8
Sand Blasters	44
Service Jacks	11
Smoke Machine	43
Solvent Part Washers & Parts	45
Spray Gun Cleaners	45
Scissor Frame Jack	20
Suction Pump (Air)	32

T

Tire Changers/Accessories	14-16
Tire Inflation Gauges	16
Tire Test Tanks	43
Trailer Stands	8
Transmission Jacks	9
Treadle Pump	13
Truck Wheel Dollies	12

U

Utility Cart	2
--------------	---

V

Vac Blaster	44
Vacuum Pump	38, BP
Vises	3
Vehicle Lifts	20-21

W

Waste Oil Drains	38, 39, BP
Waste Oil Pump (Air)	32
Water Separators	24, 32
Welding Carts & Hoses	43
Welding Gloves & tips	42
Welding Tip Cleaners	42
Wheel Balancer	15
Wheel Chocks	11
Wheel Dollies	12
Wheels (Replacements)	46
Wheel-On Digital Gauges	23
Wheel Weight Tool	15
Whip Hoses (Grease)	34
Windshield Coating	12
Window Tint Meter	23
Workbenches	2
Wrench & Socket Measuring Gauge	BP



Supporting
Our Canadian Distributors
Coast To Coast Since 1969

**NEW
ARRIVALS**



**1:1 Stainless Pump (208L) for
WWF & Water Based Fluids**
MODEL # **FPW-22777**



**60:1 Orion Grease
Pump for Pail**
MODEL # **GP-12750**



Portable Suction Drain Unit
MODEL # **OR-22590**



**Manual Brake Pad Gauge,
8 Piece, 2mm to 12mm**
MODEL # **DC-942-MIL**



Digital Dial Indicator
MODEL # **SI-128DI**



**Digital Control Handle
for WWF & Water Based Fluids**
MODEL # **WBF-24144**



**Control Handle for Coolant,
WWF. Built-in Swivel 1/2" BSP**
MODEL # **WBF-2468060**



Brake Drum Handler
MODEL # **BDH-500**



**Wrench/Socket Metric
Measurement Tool w/LED Light**
MODEL # **WI-101**



**Heavy Duty Headlight
Restoration Kit**
MODEL # **DC-DTR227**

DISCLAIMER: We strive to make sure the content of this booklet is accurate. However, after print, some information may change. Visit our website for updated information at: canbuilt.com

Affiliated Companies

