



INDUSTRIAL, FLEET & AUTOMOTIVE EQUIPMENT



**YOUR CANADIAN MANUFACTURER &
PROFESSIONAL EQUIPMENT SUPPLIER**

SUPPORTING OUR DISTRIBUTORS COAST TO COAST SINCE 1969

SF2023/24

HEAVY DUTY FLOOR JACKS

**SUPERIOR
LIFTING POWER
INSIDE EACH
JACK**



10

Ton Capacity

Manual Control

MODEL # **SJ-20100Y**

Air/Manual Control

MODEL # **SJ-30100Y**



15

Ton Capacity

Air Control

MODEL # **SJ-30150YS**



20

Ton Capacity

Air/Manual Control

MODEL # **SJ-30200YM**

MODEL	DESCRIPTION	CAPACITY TONS	LIFT RANGE			OVERALL CHASSIS			
			HIGH	LOW	LENGTH	WIDTH	HEIGHT	WEIGHT	
SJ-20100Y	MANUAL	10	22"	6 1/4"	61"	18"	10"	345 Lbs	
SJ-30100Y	AIR/HYDRAULIC	10	22"	6 1/4"	61"	18"	10"	345 Lbs	
SJ-30150YS	AIR/HYDRAULIC	15	25 1/2"	7"	68 1/2"	20"	9"	518 Lbs	
SJ-30200YM	AIR/HYDRAULIC	20	24"	7 1/2"	67"	20"	10"	507 Lbs	

SERVICE & FLOOR JACKS

Standard Duty

22

Ton Capacity

MODEL #
SJ-25200CT

- 8 7/8" Low
- 17 1/8" High
- 3-1/2" extension screw
- Includes: 6/8", 1", 2 3/8" and 4" height adapters



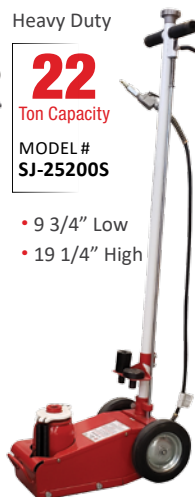
Heavy Duty

22

Ton Capacity

MODEL #
SJ-25200S

- 9 3/4" Low
- 19 1/4" High



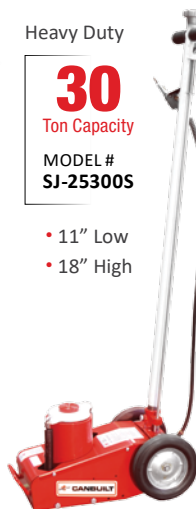
Heavy Duty

30

Ton Capacity

MODEL #
SJ-25300S

- 11" Low
- 18" High



Heavy Duty

50

Ton Capacity

MODEL #
SJ-25500S

- 12" Low
- 19" High



Two Sided Wheel Chock

MODEL # **DC-515-002**

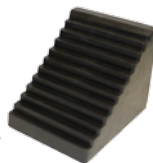
- 10"x8"x6" - 3.84 kgs



One Sided Jumbo
Wheel Chock

MODEL # **DC-515-003**

- 9.5"x6.5"x7.5" - 6.2 kgs



3.5

Ton Capacity

Manual Control

MODEL # **SJ-20350S**



5

Ton Capacity

Manual Control

MODEL # **SJ-20501S**

MODEL # **SJ-20500Y**

Air/Manual Control

MODEL # **SJ-30500Y**



MODEL	DESCRIPTION	CAPACITY TONS	LIFT RANGE		LENGTH	OVERALL CHASSIS		
			HIGH	LOW		WIDTH	HEIGHT	WEIGHT
SJ-20350S	MANUAL	3.5	21 5/8"	4"	30 7/8"	14 7/8"	7 1/4"	108 Lbs
SJ-20501S	MANUAL	5	22 1/4"	6 1/2"	54"	18 3/8"	7 1/4"	222 lbs
SJ-20500Y	MANUAL	5	22 1/16"	5 7/8"	55 7/8"	14 3/4"	7 7/8"	243 Lbs
SJ-30500Y	AIR/HYDRAULIC	5	22 1/16"	5 7/8"	55 7/8"	14 3/4"	47 7/8"	253 lbs

HEAVY DUTY SAFETY STANDS

with Pin Style Adjustment

SAFETY STANDS ARE CAPACITY RATED BY THE PAIR, AND MUST BE USED AS SUCH.



MODEL # 10TSH



MODEL # 10T



MODEL # FLS-0100



MODEL # FLS-0200



MODEL # 20TS



MODEL # 30TS



MODEL # 5000S



MODEL # TS-20



MODEL # 4000



MODEL # TS-21



SLIDER TOP OPTIONS



SADDLE TOP
It comes standard on all the stands



FLAT TOP
Available upon request for models: 20TS, 30TS, TS-20



SADDLE SCREW TOP
Standard on Model TS-21. Available upon request for TS-20



FLAT SCREW TOP
Standard on TS-20 and TS-21. Available upon request

IMPORTANT

FLANGE STYLE, OPEN BASE DESIGN Should be used on flat, solid surfaces only:
Models # 10TSH, 10T, 4000 and 5000S



Use additional support when supporting heavy, unknown loads or where ground tremors exist, due to blasting or nearby heavy equipment movement. Safety stands are **CAPACITY RATED BY THE PAIR** and for static loads only. Shock loads could weaken, damage or destroy the stands.

MODEL	CAPACITY PAIR	STAND DESIGN	HEIGHT		BASE DIMENSIONS	BASE STYLE	WEIGHT EACH
			LOW	HIGH			
10TSH	10 Ton	Low-profile	10"	16"	8" x 11"	Flange	18 Lbs
10T	10 Ton		15"	25"	11" x 13"	Flange	22 Lbs
FLS-0100	10 Ton	Low-profile	9 1/2"	16"	8" x 9 1/4"	Solid	17 Lbs
FLS-0200	20 Ton	Low-profile	10 1/2"	18 3/4"	12" x 12"	Solid	34 Lbs
4000	2 Ton	High Stand	58"	76"	11" x 13"	Flange	40 Lbs
5000S	10 Ton	Mid-height	26"	39"	11" x 13"	Flange	35 Lbs
20TS	20 Ton		16 1/2"	26 1/2"	12" x 12"	Solid	40 Lbs
30TS	30 Ton		16 1/2"	26 1/2"	12" x 12"	Solid	45 Lbs
TS-20	20 Ton	Trailer Mid	31"	51"	31" x 31"		120 Lbs
TS-21	20 Ton	Trailer High	51"	78"	34" x 34"		160 Lbs

TRANSMISSION JACKS

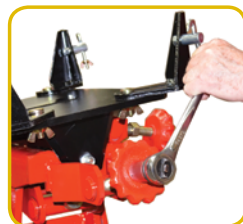
Heavy duty top of the line

3000

Lbs. Capacity

**Heavy Duty
Transmission Jack**

MODEL # TJ-425Y



Head Controls give a
ONE HAND precision
adjustment, Side to side
and front to back



Air/Manual

MODEL # TJ-275Y

1000

Lbs. Capacity

**TELESCOPIC
TRANSMISSION JACKS**



Manual

MODEL # TJ-200Y

MODEL	BASE DIMENSIONS	CAPACITY	LIFT RANGE		FWD	HEAD TILT		WEIGHT
			LOW	HIGH		REAR	LATERAL	
TJ-425Y	24" x 44"	3000 Lbs	7"	36"	30°	15°	12°	375 Lbs
TJ-200Y	34" x 36"	1000 Lbs	33"	69"	30°	15°	25°	160 Lbs
TJ-275Y	34" x 36"	1000 Lbs	36 5/8"	72 5/8"	30°	15°	15°	200 Lbs

GOJAK & RAKJAK LIFTING SYSTEM

3600 Lbs Gojak Air

MODEL # GOJ-GA3620

- Vehicle side lift in under 5 seconds!
- Smooth lifting and lowering Feather Air Control Valve
- Multiple grease fittings to ensure long life
- Solid Steel Wheels with Bronze Bushings



SUPER FAST LIFTING



3

TONS

Air Operated RAKJAK (Triple Bag)

MODEL # RJ-TB3 (EA)

- 6 7/8" low, 18" high

2

TONS

Air Operated RAKJAK

MODEL # RJ-DB2 (EA)

- 5 3/4" low 13 3/4" high (2 bag)
- MODEL # RJ-TB2 (EA)
- 6 7/8" low, 18" high (3 bag)

Retrofit Long Handle RAKJAK

MODEL # RJ-TBH

- Turns RakJak into a service jack

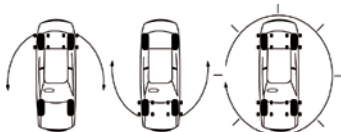


GOJAK SELF-LOADING DOLLIES



AUTOMOTIVE POSITIONING SYSTEM IDEAL FOR NEW CAR SHOWROOMS OR BODY SHOPS

- NON marking, NON marring
- FULL swivel industrial casters
- Precise ratcheting mechanism
- Full control for vehicle positioning



Angled Ratchet Lever Dolly for small aircraft 4,100 Lbs

MODEL # **GOJ-4100 (EA) L/R**

- For tires to 7" wide
- 4,100 capacity with 4 units



5,200 Lbs GoJak

MODEL # **GOJ-5211 (EA) L/R**

- For tires to 11" wide
- 5,200 capacity with 4 units



OPTIONAL

GoJak Storage Rack

MODEL # **GOJ-0456**



GoJak Wall Bracket

MODEL # **GOJ-BKT (pair)**

**GoJak
Parts
available**



4,500 Lbs GoJak

MODEL # **GOJ-4520 (EA)**

- For tires to 20" wide
- 4,500 capacity with 4 units



6,300 Lbs GoJak

MODEL # **GOJ-6313 (EA) L/R**

- For tires to 13" wide
- 6,300 capacity with 4 units

7,000 Lbs GoJak For SUV & Light Duty Trucks

MODEL # **GOJ-7016**

- For tires to 16" wide
- Max weight per tire 1,725 Lbs
- Max tire diameter 33"
- Casters (4) 3" H x 13/4" W
- Steel rollers
- Not recommended for rough surfaces
- 7,000 capacity with 4 units



HEAVY DUTY BOTTLE JACKS

MANUAL BOTTLE JACKS



- Jacks designed for use in vertical, horizontal or angular position (pump to the underside of the reservoir)
- Deep grooved extension for added height

MODEL	CAPACITY	LOW	HIGH	WEIGHT
BJ-4CT	4 Ton	7"	13 3/4"	6 Lbs
BJ-6	6 Ton	8 1/2"	16 5/8"	11 Lbs
BJ-8	8 Ton	9 1/2"	18 5/8"	13 Lbs
BJ-12	12 Ton	10"	19 3/4"	18 Lbs
BJ-20CT	20 Ton	9 1/2"	17 3/4"	21 Lbs
BJ-30	30 Ton	9 1/2"	15 1/2"	65 Lbs
BJ-50	50 Ton	9 1/4"	15"	70 Lbs

8 TON CAPACITY LONG RAMS



MODEL	HYDRAULIC	CLOSED	OPEN
LSJ-8MCT	Manual	23 7/8"	42 3/4"
LSJ-8ACT	Air/Manual	24 1/4"	43 1/8"

RAMS



4 Ton Ram

MODEL # BSR-825S

10 Ton Ram

MODEL # BSR-1625S

DUAL CONTROL AIR/ MANUAL BOTTLE JACKS



- Dual control
- Screw adjustment for added height
- 90 – 120 PSI operating pressure

MODEL	CAP.	LOW	HIGH	HOSE LENGTH
SJ-40201TT	20 Ton	10 7/16"	20 1/16"	46"
SJ-40300S	30 Ton	11"	18"	46"

HYDRAULIC POWER PACKS



4 Ton Kit

MODEL # BSK-800CT

10 Ton Kit

MODEL # BSK-1600CT

HYDRAULIC PUMPS



Air Operated Treadle Pump

MODEL # BSA-1800CT

- Operating PSI- 10,000

Manual Hand Pump

MODEL # BSP-1650S

WHEEL DOLLIES & SHOP ESSENTIALS

DUAL WHEEL DOLLIES

For The Installation, Removal Of Dual Wheels From Trucks, Trailers And Buses



Dual Wheel Dolly

MODEL # 2100

- 3 1/4" low - 5" high
- 1500 capacity

1500
Lbs. Capacity



High Lift Wheel Dolly

MODEL # 2100HL

- 3 1/4" low - 19" high
- 1500 capacity

4 Wheel Engine Stand Heavy Duty Commercial

MODEL # 1500

- Powder coated durable finish
- Bolt together design

Replacement wheel

Model # WK-31

1500
Lbs. Capacity



Turbo Blo-Gun Engine Cleaner

MODEL # DC-S-184

- Air inlet: 1/4" NPT female (1/4" FNPT inlet thread size)
- 5' siphon liquid transfer tube
- 225 Max PSI



Tire Rider Tuff

MODEL # CB-MTC

- Dimensions: 28 3/8" L x 33 5/8" W x 62 7/8" H
- Max. Tire size: 35" OD
- Capacity: 6 to 8 tires or 550 Lbs
- Weight: 79 Lbs



Canuck Tire Puck

MODEL # CB-MCTP

- Dimensions: 25-5/8" L x 25-5/8" W x 4-3/4" H
- Load Capacity: 300 lbs
- Weight : 8,8 Lbs



Axle Drain Pan

MODEL # DC-30600

- Fits most 10-hole Super Single, Dual Disc Wheels, aluminum 22.5" and 24.5" 10-hole hub
- Catches oil and grease

POWER SPORT LIFT

- RELIABLE & EASY TO USE
- FOR MOTORCYCLES, ATV'S AND SNOWMOBILES
- AIR POWERED WITH FOOT PEDAL CONTROL

High Rise Motorcycle ATV Lift Bench

MODEL # **ML-3500**

- Min Height 6 3/4"
- Max Height 38 1/2"
- Table Dimensions 88 1/2" x 31 1/2"
- Table w/side extensions 88 1/2" x 50"
- Weight 780 Lbs
- Mini Jack model # **ML-3000SJ** available 1000lbs capacity



1500
Lbs. Capacity

Motorcycle Lift

- Min Height 7"
- Max Height 30"
- Table Dimensions 84" x 24"
- Table w/side extensions 84" x 48"

1000
Lbs. Capacity



Available Configurations:



Air Operated Platform Lift, with no vise or extensions

MODEL # **ML-3000NV**



Air Operated Platform Lift, w/ Side Extensions & Wheel Vise

MODEL # **ML-3000CMT**

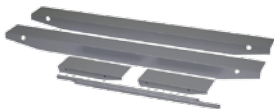


Air Operated Platform Lift includes vise

MODEL # **ML-3000**

Motorcycle not included

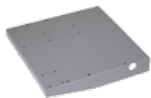
Optional Accessories



12" Side Extensions

MODEL # **ML-3000SE**

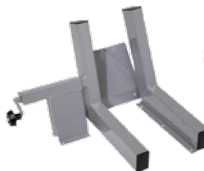
- Length 84"
- Width 12" each



Front Extension

MODEL # **ML-3000FE**

- Adds 13" to Platform length



Front Wheel Vise

MODEL # **ML-3000VI**



Scissor-Frame Jack

MODEL # **ML-3000SJ**

- Mini Jack
- 1000 lbs capacity

MID-RISE VEHICLE LIFTS

Mid-Rise Scissor Lift MODEL # VL-MRL648X

6000
Lbs. Capacity

Improved extension
arm length to 24"

NORTH AMERICAN HYDRAULICS!

Power unit approved to Canada's
electrical standards

SPECIFICATIONS

Lifting Capacity	6,000 Lbs
Overall Length	96 1/2"
Overall Width	39 5/8" - 62"
Lowered Height	4 3/4" Max Lifting
Height w/ Pads	48 1/2" Max Lifting
Height w/ Adapters	54"
Motor	1 HP/110V

Portable Mid-Rise Pad Lift MODEL # VL-MRL638P

6000
Lbs. Capacity

EXCEPTIONAL VALUE:

- For tire, wheel, brake, collision repair or new car preparation

FEATURES:

- 6,000 lb. lift capacity w/ auto double safety lock system w/ air release
- Twin Hydraulic cylinders for maximum strength & stability
- 38" working height
- 4" drive-over height for approach of low vehicles
- Overall width 76 1/2", length 77"
- Motor 1 HP 110V
- Approved to Canada's electrical standards

- TWIN CYLINDER
- CLEAR WALK-THROUGH



Optional SUV Adapter Kit available

MODEL # VL-MRL638SUV

SAFETY INSPECTION TOOL PACKAGES



Headlight Aimer
easy lock / unlock
mechanism for height
adjustment



OPTIONAL
LASER ALIGNMENT VISOR
MODEL # OPT-5560

PANTHER AIMER ONLY
MODEL # OPT-5405

Aimer Protective Cover
MODEL # OPT-5500



OPTIONAL
LIGHT INTENSITY METER
MODEL # OPT-5555



Floor slope
adjustment knob

Floor slope
register

THE CANBUILT PANTHER AIMER

Accurately aims all
head lamps, makes,
models & years,
including:
Xenon, HID and LED

**PERFORMS TO ALL
D.O.T. AND M.T.O.
REQUIRED
SPECIFICATIONS
IN CANADA**

Meets & exceeds
The SAE J600
International Standard

Floor Slope Laser Assy

MODEL # OPT-5550

Laser guided floor slope
measurement system

WHAT IS IN EACH SAFETY INSPECTION TOOL PACKAGE?

Includes	SI-PKG	SI-PKGPLUS	SI-PKGTR	SI-PKGTRPLUS
OPT-5405	✓	✓	✓	✓
OPT-5500	✓	✓	✓	✓
SI-660RG	✓	✓	✓	✓
SI-091DG	✓	✓	✓	✓
SI-105BJ	✓	✓	✓	✓
SI-658DC	✓	✓	-	-
SI-200TNT	-	✓	-	✓
SI-631DG	-	-	✓	✓

ALL PACKAGE ITEMS ARE AVAILABLE INDIVIDUALLY

OPTIONAL
ELUCIDATION FILTER
MODEL # OPT-5552



SAFETY INSPECTION / PRECISION

Digital Rotor Caliper

MODEL # SI-660RG

- LED display
- Inch/Metric/Fractional
- Measures brake rotors
- 3.5" long arms

Digital Ball Joint Gauge

MODEL # SI-105BJ

- Range: 0 - 1"
- Graduation: .001"
- Inch/Metric/Fractional

Digital Tread Depth Gauge

MODEL # SI-091DG

- Inch/Metric/Fractional

Digital Brake Drum Caliper

MODEL # SI-658DC

- Range 6-20"
- Graduation : .0005"
- Inch/Metric/Fractional

Window Tint Meter

MODEL # SI-200TNT

- Compliant for roll-down & fixed glass
- Back-lit display for easy reading
- Low battery light indicator
- Powered by heavy duty 9v alkaline battery for dependable operation year round
- Easy access to battery slot
- Built to a N.I.S.T. traceable standard
- Auto shut off for longer battery life
- Ergonomic design, fits comfortably in your hand
- Most advanced meter on the market: precise and repeatable measurement
- Easy to use!

**OUR TINT METER
COMPLIES WITH
LEGISLATION IN
ALL PROVINCES
& STATES**



Wheels-On Digital Brake Drum Caliper

MODEL # SI-631DG

- Check drums without removing the wheel
- Range 0 - 16.65"
- Graduation: .005"
- Arm depth: 3 3/4" for ON vehicle, up to 6" OFF vehicle
- Inch/Metric Fractional

OPTIMIZE TRUCK INSPECTION TIME,
USING "WHEELS-ON" DIGITAL GAUGES
"WHEELS-ON" INSPECTION IS NOW
M.O.T. RECOGNIZED

Replacement Anvils for 631DG (set of 2)

MODEL #RP-SI631DGA

Wheels-On Digital Rotor Gauge

MODEL # SI-665RG

- Inch/Metric Fractional



TIRE CHANGERS



Tire Changer Swing Arm Style

MODEL # **TC-0328IT**

SHOWN WITH OPTIONAL

Tecnoswing Arm & Roller Kit

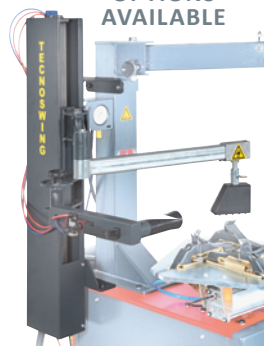


Optional Slide Guard Kit (Pkg 4)

MODEL # **MB200589**



OPTIONS AVAILABLE



**Tecnoswing Arm
& Roller Combo Kit**

MODEL # **TC-0300TS**

- Recommended for low profile and high performance tires

ACCESSORIES

KIT MODEL #
MB199130

2 of each,
Nylon protectors



**Front Duck Bill
Nylon Protection**

MODEL # **MB200130**



**Tail Side Duck Bill
Nylon Protection**

MODEL # **MB200272**



Lube Swab

MODEL # **DC-30511**



Lube Brush

MODEL # **DC-30512**



NEW

TILT BACK STYLE TIRE CHANGER

MODEL # **TC-0724IT**

Shown with optional
Tecnohelp & Helper Group assist
MODEL # **TC-0550TH**

MODEL	SPEED	WHEEL WIDTH	WHEEL DIAMETER	CLAMPING		HELPER ARM & ROLLER ARM KIT
				INSIDE	OUTSIDE	
TC-0328IT	2 Speed 10 - 17 RPM	3" - 16"	Up to 44"	10" - 28"	12" - 31"	Available
TC-0724IT	2 Speed 7 - 14 RPM	3" - 17"	Up to 46"	10" - 24"	12" - 27"	Available

Visit www.canbuilt.com for accessories or additional information

WHEEL BALANCERS

Digital Wheel Balancer with Automatic Gauge

MODEL # **WB-0330XL**

Features

- Automatic gauge for correct distance and diameter measurements and self-activation of the ideal balancing program (for clip-on or stick-on weights)
- Virtual Sonar acquires automatically the 3D width of iron rims, with the same performance of the traditional Sonar technology
- Innovative Auto-Adaptive software recalculates the acceptable unbalance value according to the weight and dimensions of each wheel
- New 40% more spacious and functional weight tray with surface increased by Intuitive and user-friendly interface to ease the operation
- Work optimization thanks to reduced balancing times
- Low rotation speed with subsequent power save
- Space-saving wheel guard
- Electric brake to lock the wheel and to ease the application of weights

Included:



Wheel Weight Tool
MODEL # **MB100152**
Available separately

MODEL	TYPE	TIRE WEIGHT	RIM WIDTH	RIM DIAMETER	WHEEL WIDTH	WHEEL DIA.
WB-0330XL	Automatic	Max. 165 Lbs	1.5" - 20"	10" - 30"	Max 20"	Max 40"

Wheel Lift

MODEL # **WBL80**

- Air operated wheel lift for wheel balancers for tires up to a maximum of 176 Lbs/80 kg



Universal Adapter Kit for WB-0255/0277

MODEL # **MB300581**

- 4" & 5" Centering cones,
- fit 40mm O.D. flange (shaft)
- 2 SUV Universal spacers



Wheel Weight Tool
MODEL # **DC-35355**

Pressure Brake Bleeder & Fluid Drainer

MODEL # **BFD-39560**

The unit includes:

- Set of six connection fittings to the brake fluid reservoir
- Set of drain deposits with adapters

Connections Plugs

MODEL # **BFD-39561**



Universal Adapter for Brake Bleeder
MODEL # **BFD-39580**

TIRE CHANGER ACCESSORIES

TIRE CHANGER OPTIONS



LL Mounting Head Rear Protector

MODEL # **MB201254**



LL Tower Tab Front Protector

MODEL # **MB201198**



Helper Arm Push Pad Shoe

MODEL # **MB201331**



Duckbill Tower Assy

MODEL # **MB201107**



Large Bead Pressing Roller for TC-5000

MODEL # **MB201321**

Replacement Bead Pressing Roller for TC-0300TS/TC-0550TH

MODEL # **MB200362**



Plastic Duckbill Head w/o Metal Insert

MODEL # **MB201755**



Nylon Bead Breaker Protector

MODEL # **MB200215**



Nylon Tire Lever Protector

MODEL # **MB201359**

OPTIONAL ACCESSORIES



Turntable Jaw (Wedge)

MODEL # **MB200254**



Plastic Jaw Inserts (4 PK) for MB 200254

MODEL # **MB200242**



Tire Changer Motorcycle adapter

MODEL # **MB200604**

• Set of 4



Truck Tire Inflator Gauge

MODEL # **DC-553**

INFLATORS AND BLOWING GUNS



Digital Pistol Grip Inflator Gauge w/lock-On Chuck

MODEL # **DC-S-568**



Digital Pistol Grip Inflator Gauge

MODEL # **DC-EX0500D**



Analogue Pistol Grip Inflator Gauge

MODEL # **DC-EX0500P**



Large Bore Inflator

MODEL # **DC-556**



Blo-Gun 4' Ext. w/Safety & Rubber Tip

MODEL # **DC-159**



Blo-Gun 2' Ext. w/Safety & Rubber Tip

MODEL # **DC-158**

PROFESSIONAL RUSTPROOFING



Wand Kit 4 pc set MODEL # LRP-2152



INCLUDED	PNEUMATIC AIRLESS				
	FOR PAIL: LRP-2000K	FOR KEG: LRP-2010K	FOR DRUM: LRP-2020K	FOR KEG: LRP-L033204K	FOR DRUM: LRP-L033205K
Pump 15:1 Ratio	LRP-L090001	LRP-L090003	LRP-L090004	LRP-L090004	
Advanced Application Gun	LRP-F1001			LRP-L50	
25 ft twin Hose	RP-LRP25FT			LRP-L31078 (single hose)	
Dual Air Regulator Gauges w/ glass face	RP-LRPL011195			LRP-L090301 (air regulator)	
2" bung adapter for standard cover	RP-LRPL090053			RP-LRPL090053	
Dolly	N/A	DD-5159	DD-45	DD-5159	DD-45
Steel Cover	18527	18532	*Optional # 18525	18532	*Optional # 18525
Wand Accessories	LRP-2152			LRP-L033210	

Parts and accessories available separately. i.e. Various size spray tips
SEE BACK PAGE FOR NEW RUSTPROOFING ARRIVALS AND PARTS!

FILTER CRUSHERS

Air operated Reduces trash volume by 75% and recovers up-to 95% of free flowing fluids.

FOR STANDARD FILTERS

4 Ton Capacity Filter Crusher

MODEL # FC-0600

- Air pressure 120 PSI
- Air cylinder dia. 9.84"
- Max filter height 9.8"
- Max filter dia. 8.5
- Filter crusher depth 15"
- Filter crusher height 39"



FOR TRUCK FILTERS

7 Ton Capacity Filter Crusher

MODEL # FC-1000

- Air pressure 120 PSI
- Air cylinder dia. 12.6"
- Max filter height 16.5"
- Max filter dia. 12.6"
- Filter crusher depth 23"
- Filter crusher height 61"



MULTI-FUNCTION LIFTING SYSTEM

THE CANBUILT ARM

Up to
1500
Lbs. Capacity

**AIR/MANUAL
DUAL CONTROL
HYDRAULIC**

MODEL # 5200

- Base model Includes Boom & Hook
- Weight: 240 lbs

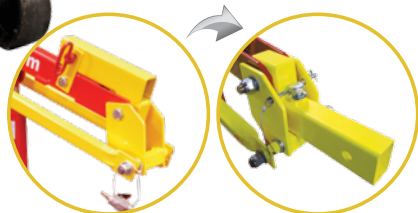
Quick Change
Flip-Over Tool Holder



**STANDARD
CRANE MODE**

QUICK CHANGE FLIP-OVER TOOL HOLDER

Once enabled and locked, the operator can switch from standard crane to Power Arm for parallel lifting. Also can use all the extra adapters for horizontal lifting in high and low modes as well as the articulation leveling platform.



Up to
800
Lbs. Capacity

PARALLEL LIFTING MODE

- For OVER/UNDER applications



MULTI-FUNCTION LIFTING SYSTEM

OPTIONAL ACCESSORIES

Up to
800
Lbs. Capacity

HORIZONTAL LIFTING MODE

Secure with Hitch Pin

High Position **Standard Boom & Hook**
(Included on base model 5200)

Low Position

2 Piece Horizontal Boom Adapter for 5200
MODEL # 5260

1. Adapter for Flip-Over-Tool
2. Height Adapter

Option to telescope legs backwards

Counter Balance

MODEL # 5280

- 100 Lbs
- Use multiples for extra weight
- Works with all Canbuilt cranes, colour may vary

Skid Spreader

MODEL # 3200SSL

- Works with all Canbuilt cranes except Model # 4400P

Standard Boom & Hook
(Included on base model 5200)

Up to
800
Lbs. Capacity

ARTICULATING LEVELING PLATFORM MODE

2 Piece Articulating Leveling Platform for 5200

MODEL # 5250

1. Leveling Platform
2. Adapter for Flip-Over-Tool

Lift Platform Transaxle/Gas Tank Adapter for 5200

MODEL # LS-1000

- To be used in conjunction with Articulating Platform

HEAVY DUTY CRANES

A COMPACT AUTOMOTIVE CRANE WITH A BIG ATTITUDE

4200 AND 4200P

These cranes in manual or air/manual configuration, sit on a flow through base, a feature unique to all of our cranes. It allows the legs to be telescoped front to back thus enabling the use of counter balance.

Also, it can be enhanced with two optional 12" Mast Height Adapters for a total of 24" higher, bringing the mast height to 83" tall.



1

**1 Ton Capacity
Mobile Crane
MODEL # 4200P
AIR/MANUAL
HYDRAULIC**

**MODEL # 4200
MANUAL
HYDRAULIC**



MADE IN CANADA



Load up to 600 Lbs of counter balance on the back of the legs.
Counter balance Model # 5280 (100 Lbs each)



**OPTIONAL
MAST HEIGHT ADAPTERS
FOR MODELS # 4200/ 4200P**

MODEL # 3275

MODEL # 3276

Together add 24" height to the mast for a total of 82" (Adapter colour may differ from picture)

COMPACT FOR STORAGE



HEAVY DUTY CRANES



2

Ton Capacity

Industrial Mobile Crane

MODEL # 3900

MANUAL HYDRAULIC

MODEL # 3900P

AIR/MANUAL HYDRAULIC

3900 AND 3900P

Available in manual or air/ manual configuration. Can be enhanced with our Skid Spreader adapter Model # 3200SSL. Also can take advantage of counter weights, similarly to the 5200 and 4200 cranes.

A great crane for automotive and industrial applications.



All Canbuilt cranes feature a flow-through base that allows legs to telescope front & back



Up to

4,400

Lbs. Capacity

Heavy Duty Industrial Mobile Crane

MODEL # 4400P

AIR/MANUAL HYDRAULIC



MODEL	CAPACITY	OVERALL HEIGHT	BASE WIDTH	BASE LENGTH		REACH	BOOM HEIGHT	WEIGHT
				MIN	MAX			
4200/4200P	Up to 2000 Lbs	59"	41"	54"	71"	27" - 50"	0" - 99"	200 Lbs
3900/3900P	Up to 4000 Lbs	60"	41"	33"	71"	25" - 48"	0" - 101"	300 Lbs
4400P	Up to 4400 Lbs	75"	50"	46"	98"	32" - 60"	20 1/2" - 116"	950 Lbs

BENCH GRINDERS, VISES & DRILL

BENCH GRINDERS - SLIM LINE



8" Medium Duty

MODEL # **BG-890**

- Wheel Size: 8" x 3/4"
- Motor: 7 Amp, RPM: 3450

Eye Guard for BG-890

MODEL # **BG-880EG**



10" Heavy Duty

MODEL # **BG-1080**

- Wheel Size: 10" x 3/4"
- Motor: 14 Amp, RPM: 1720

Eye Guard for BG-1080

MODEL # **BG-1080EG**

BENCH GRINDER STANDS



MODEL # **GP-150**

- Cast iron with coolant reservoir
- 32 3/4" high
- For 6" to 8" grinders



MODEL # **GP-1**

- 32 1/2" high
- 7" x 8" top plate
- For 6" to 8" grinders

12" HD Bench

Grinder with Floor Stand

MODEL # **BG-1295HD**

- 1.5 HP direct drive motor
- 1,800 RPM
- 12" x 2" grinding wheels
36 grit and 60 grit



DRILL PRESS

17" Drill Press

Floor Model

MODEL # **DPF-18FC**

- 1HP Motor
- Spindle with high quality bearings
- Cast iron pulleys reduce vibration
- 45° tilting table for angular drilling
- Locking depth stop
- 5/8" drill chuck
- 16 speeds (240-3400 RPM)
- 13 3/4" table size



(Light bulb not included)

SHOP VISES



Record

HD fine casting, machined jaw and anvil

Record Mechanic's Vises

6" Fixed

MODEL # **VI-600**

- 8" full opening jaw

8" Fixed

MODEL # **VI-800**

- 9" full opening jaw



**Universal Swivel Base
for 6" & 8" Record Vise**

MODEL # **VI-6SB**

NEW



5" Mechanic's Vise

MODEL # **VI-5CAN**

- 5" full opening jaw
- 360 degree rotating head and swivel base

NEW



6" Fixed

MODEL # **VI-6CAN**

- 6" full opening jaw

8" Fixed

MODEL # **VI-8CAN**

- 8" full opening jaw

S&G steel casting, serrated hardened jaws and built-in anvil. Permanent pipe jaw included.

HEAVY DUTY WORKBENCHES

- **ERGONOMIC, MODULAR, BOLT TOGETHER DESIGN**
 - 14 GAUGE STEEL, FOR HEAVY DUTY TASKS
 - POWDER COATED FINISH FOR DURABILITY



shown with **optional** add-ons:
2 half shelves & drawer kit



shown with **optional** add-ons:
1 half shelf & drawer kit

WORKBENCHES

MODEL # WB-1-48

- 26"D x 48"L x 36"H

MODEL # WB-1-60

- 26"D x 60"L x 36"H

MODEL # WB-1-72

- 26"D x 72"L x 36"H

OPTIONS

1/2 Bottom Shelf

MODEL # WB-B-48

- 12" x 48"

MODEL # WB-B-60

- 12" x 60"

MODEL # WB-B-72

- 12" x 72"

Drawer Kit

MODEL # WB-D

- 12" x 23" x 4"

WALL MOUNT WORKBENCHES

MODEL # WM-1-48

- 26"D x 48"L x 36"H

MODEL # WM-1-60

- 26"D x 60"L x 36"H

MODEL # WM-1-72

- 26"D x 72"L x 36"H



Neoprene Top Liner

MODEL # WB-NL-72

- 24" x 72" x 1/8"

**WET BENCH KIT
(OPEN STYLE ONLY)
AVAILABLE MODEL #
WB-TBK-60**

CANBUILT H.D. UTILITY CART

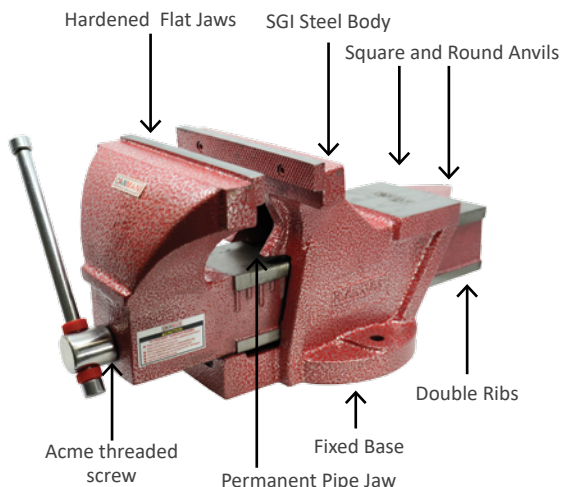
14 Gauge steel construction;
Shelf size 14" x 29"; 30" overall height



3 Shelf Utility Cart

MODEL # MC-3

6" AND 8" VISES FEATURES



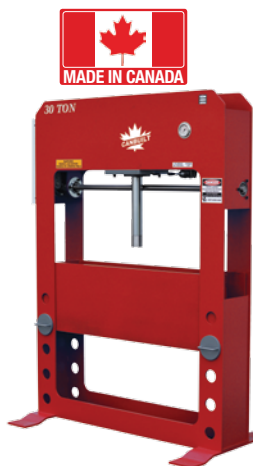
**Don't see what you
are looking for? Visit:**



CANBUILT.COM

INDUSTRIAL HEAVY DUTY PRESSES

Electric-Hydraulic



MODEL # EH-30T



MODEL # EH-100T

Shown with optional Safety Guard



MODEL # EH-50BP12STD

Also available with movable head:

MODEL # EH-50BP12WNH

H Frame Presses 30/50/100/200/250 TON

Standard Features on All Models

- Electric / Hydraulic operation, just add your start/stop switch
- Self-locking table design eliminates lateral movement
- Open sides to ease work on long pieces
- Flat ram nose, easily changed, to adapt the press to a specific job
- Quality Baldor motor, low speed pump, quiet and reliable
- Hydraulic power lift for table adjustment
- Double-acting cylinder allows pulling as well as pressing
- CSA approved

NPT DELUXE FRL TRIO

These pre-assembled units feature polycarbonate bowls with metal bowl guards for better protection.

NEW



1/4" FRL Trio

MODEL # DC-1100

3/8" FRL Trio

MODEL # DC-1101

1/2" FRL Trio

MODEL # DC-1102

Mounting Bracket for DC-1100 FRL

MODEL # DC-S-1163-1



MODEL	POWER	BORE INCH	STROKE INCH	CAP. (TONS)	WEIGHT (LBS)
EH-30T	5HP 230 1 phase	5	16	30	1,400
EH-50T	5HP 230 1 phase	7	16	50	2,200
EH-100T	10HP 230 1 phase	8	12	100	3,000
EH-200T	10HP 575 3 phase	12	20	200	7,400
EH-250XW	20HP 575 3 phase	12	16	250	7,600
EH-50BP12STD	5HP 230 1 phase	7	16	50	2,900
		3	20	12	
EH-50BP12MNH	5HP 230 1 phase	7	16	50	3,100
		3	20	12	



ESSENTIAL FILTER/LUBRICATOR/REGULATORS (FLRS)

2 PIECE FRL

Model # FLR-238 3/8" NPT

Model # FLR-212 1/2" NPT

3 PIECE FRL

Model # FLR-338 3/8" NPT

Model # FLR-312 1/2" NPT

2 PIECE MINI FRL

Model # FLR-014 1/4" NPT

2-IN-1

Model # FLR-1559 1/4" NPT Water Filter, Regulator with Pressure Gauge

Model # FLR-1560 1/4" Filter, Reg Assy w/drain, gauge & connections

Model # DC-1100 1/2" NPT

H.D. REELS & CONTROL HANDLES



FOR AIR/WATER

MODEL # **AR-5038**

MODEL # **AR-5012**



FOR OIL/LUBE

MODEL # **LR-5012**

Hose stoppers available MODEL # **GR-5014**



FOR OIL/LUBE

MODEL # **LR-1475R**



FOR GREASE

MODEL # **GR-5014**

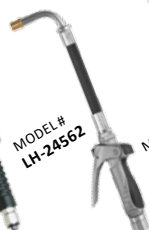
MODEL	AR-5038	AR-5012	LR-5012	LR-1475R	GR-5014
Application	Air/Water	Air/Water	Oil	Oil	Grease
Inlet/Outlet (NPT)	3/8"	1/2"	1/2"	1/2"	1/4"
Max Pressure	300 PSI	300 PSI	2,000 PSI	2500 PSI	5,000 PSI
Hose ID	3/8"	1/2"	1/2"	1/2"	1/4"
Hose Length	50'	50'	50'	32'	50'
Base Dimensions	9.5" L x 7" W	9.5" L x 7" W	9.5" L x 7" W		9.5" L x 7" W



MODEL #
LH-24792



MODEL #
LH-24675



MODEL #
LH-24562



MODEL #
DM-33502



MODEL #
DM-24785



MODEL #
DM-33512B

MODEL	LH-24792	LH-24675	LH-24562	DM-33502	DM-24785	DM-33512B
Type	Mechanical	Manual		Digital Meter		Digital Preset Meter
Fluid	Low/high viscosity lubricants, ATF, antifreeze	Oils	Oil, anti-freeze	Oil only	Oil, antifreeze	Oil only
In/Out	1/2" BSP	1/2" NPT	1/2" BSP	1/2" NPT	1/2" NPT	1/2" BSP

BLO-GUNS



Safety Tip Kit

MODEL # **DC-S-174KIT**



Rubber Tip

MODEL # **DC-S-153**



Lever Hook

MODEL # **DC-S-148**



4" Blo-Gun

MODEL # **DC-S-164**



11" Blo-Gun

MODEL # **DC-S-167**

HEAVY DUTY COMPRESSORS

- QUIET OPERATION
- SERIOUS AIR VOLUME
- DURABILITY & RELIABILITY
- MADE IN CANADA

10 HP, 34 C.F.M. @ 150 PSI, 794 RPM

MODEL # C-10120H

Magnetic Starter /Auto Drain Included

- 575V / 3 Phase, 120 Gal. Tank
- V4 Cast Iron Pump
- Low RPM for longer working life
- Oil sight glass for easy monitoring of oil levels
- Industrial quality Baldor motor
- Weight: 900 Lbs



15 HP, 50.8 C.F.M @ 150 PSI, 800 RPM

MODEL # C-15120H

Magnetic Starter /Auto Drain Included

- 575V / 3 Phase
- 120 Gal. Tank
- V4, 2 Stage Cast Iron Head
- Baldor motor
- Weight: 1200 Lbs



Programmable Auto Drain 1/4" w/strainer ball valve 1/2", 115V

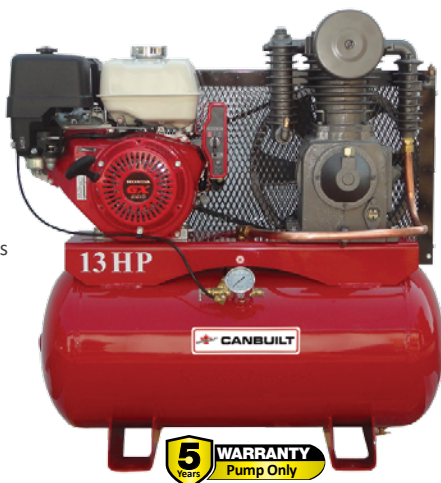
MODEL # C-AD14BV

13 HP, 24.5 C.F.M @ 150 PSI, 795 RPM

MODEL # C-1330HCICWC

Mobile unit, ideal for service trucks on highways and country roads.

- 30 Gal. tank
- 13 HP Honda Electric Start
- Centrifugal clutch included
- Low oil shut down sensor
- Sight glass for oil level checking
- Oil extension for easy oil changing
- Weight: 480 Lbs



HEAVY DUTY COMPRESSORS



ENTRY LEVEL 5 HP, 18.5 C.F.M @ 100 PSI, 1230 RPM

MODEL # **C-560V**

- 230v / 1 Phase
- 60 Gal. Tank
- 3 Cylinder
- Single Stage
- No magnetic starter required
- Motor with overload protection
- Weight: 280 Lbs



INDUSTRIAL AUTOMOTIVE

5 HP, 17.4 C.F.M.
@ 150 PSI, 794 RPM

MODEL # **C-IC580V**

**Includes Magnetic
Starter/Auto Drain**

- 230v / 1 Phase
- 80 Gal. Tank
- 2 Cylinder, 2 Stage
- Industrial quality motor with low RPM for longevity
- Weight: 635 Lbs



Additional models, sizes and voltages are available. Ask us: canbuilt.com



HIGH PERFORMANCE INDUSTRIAL/AUTOMOTIVE

5 HP, 20.4 C.F.M @ 150 PSI,
455 RPM, Single Phase

MODEL # **C-HP580V**

Generally used in areas where
3 phase power is not available.

Magnetic Starter /Auto Drain Included

- 230V / 1 Phase
- 80 Gal. Tank
- V-4, 2 Stage
- Larger, V4 Cyl. Cast Iron Heads
- Weight: 635 Lbs

Also Available as Horizontal

MODEL # **C-HP580H**



Automatic Tank Drain

MODEL # **C-WV-1**



Air Dryer for Compressors

MODEL # **C-20U**

- 1 phase
- Easy to install
- 115 volts
- Removes 99.9% Of moisture

NOTE: A prefilter must be installed before the air dryer; minimum 5 microns, Model# C-F15931A or equivalent 1/2" NPT w/auto drain.



Strongly recommended

Use a moisture control on your air lines as well as a filter, regulator, lubricator.

See page 24 for available options



LIGHT INDUSTRIAL BLAST CABINETS



**NOW WITH LED LIGHTS
FOR IMPROVED VISIBILITY**



Shown with
Standard dust
collector filters to
5 Microns

LIGHT INDUSTRIAL CABINETS

Delivers the dependable performance of industrial units, whatever the application: cleaning, etching, deburring, finishing, trimming, etc. **CSA approved**

MODEL # BC-26E

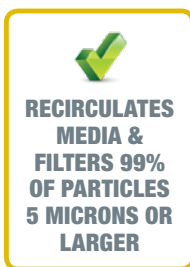
- Inside work area: 26"D x 36"W x 29"H

MODEL # BC-2644E (Jumbo)

- Inside work area: 28"D x 44"W x 30"H

Minimum air requirement is 22 CFM @ 90psi, blasting media (glass beads or aluminum oxide) and you are ready to go.

**OPTIONAL DUST COLLECTOR UNIT
AVAILABLE Model # BC-625016**



RECOMMENDED BLAST MEDIA

Glass Beads, 50 Lbs Bag

MODEL # **BC-0400**

- 30-40 (Medium-Coarse)

Garnet 80 Mesh, 55 lb bag

MODEL # **BC-0700**

- 80 (Medium-Coarse)

Aluminum Zirconia, 50 lb bag

MODEL # **BC-0600**

- 60 (Medium-Coarse)

**DO NOT USE SAND, SILICA,
CRUNCHED OR RECYCLED GLASS**

LIGHT DUTY CABINET

Perfect for a small shop, a handyman, hobbyist or DIY type.

MODEL # BC-4200

Interior Dimension:
24"D x 48"W x 22"H

- Top/side load & access
- Foot Pedal Control
- Pressure regulator and gauge
- Cartridge type dust collector
- Neon interior lighting
- Air Required to operate:
20 CFM @ 80PSI

BC-4200 RECOMMENDED MEDIA

- Glass bead
- Aluminium Oxide



BC-4200 ACCESSORIES ONLY

Gloves for BC-4200, 7" x 23.62"

MODEL # **BC-415115**

**Replacement dust collector
filter element**

MODEL # **BC-405100**

**Blast viewing window protection
film (Pkg of 5)**

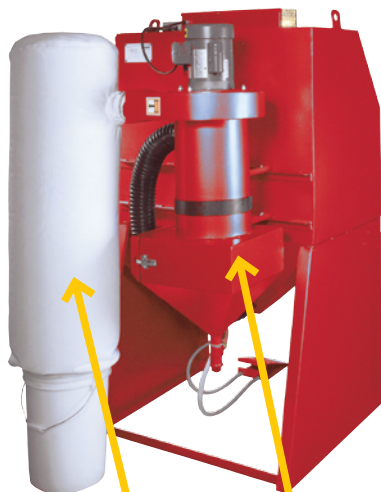
MODEL # **BC-415118**

Replacement 1/4" ceramic nozzle
MODEL # **BC-905304**

Replacement Gun for BC-4200 Only
MODEL # **BC-420010**

**Replacement glass window for
BC-4200**
MODEL # **BC-910298**

HEAVY DUTY BLAST CABINETS



Filter Bag:
filters to
5 Microns

Cyclonic
Media
Reclaimer

HEAVY DUTY BLAST CABINET W/ MEDIA RECLAIMER

MODEL # **BC-3MR**

- CSA approved
- Inside work area: 26"D x 36"W x 30"H
- Adjustable reclaimer to control media size
- Screen prevents large particles from causing clogging
- Flush construction minimizes media spill when the door is opened
- Operate with either foot using wide treadle control
- Dust collector features an energy-saving air-filtration system that captures 99% of all particles five (5) microns or larger

MODEL # **BC-2844MR** (Jumbo)

- Inside work area: 28"D x 44"W x 31"H

Additional blast cabinet
sizes and models available,
including replacement parts.



**RECYCLES MEDIA THROUGH THE
MEDIA RECLAIMER. REMOVES
DUST AND DEBRIS**

Dust Collector Unit

MODEL # **BC-625016**

- Shaker style requires minimal supervision and maintenance
- Modular and space saver
- Works with light industrial and HD cabinets



ACCESSORIES FOR LIGHT INDUSTRIAL AND HEAVY DUTY CABINETS

Plastic Window Protector (Pk of 25)

MODEL # **BC-1220**

Plastic Window Protector (Single)

MODEL # **BC-1220-1**

E3 Gloves, 8" x 30

MODEL # **BC-603212**

22" x 14" Glass window for Ecab Series Blast Cab

MODEL # **BC-610205**

5/16" Ceramic Nozzle for BC-26E

MODEL # **BC-605001**

5/16" Ceramic Nozzle for BC-3MR

MODEL # **BC-605005**

5/16" Blast Gun with Trigger

MODEL # **BC-610101**

Triggerless Blast Gun

MODEL # **BC-610120**

Dust Bag Replacement

MODEL # **BC-601315**

BODY SHOP EQUIPMENT



Vac Blaster with Media Reclaimer

MODEL # **BV-700**

- Removes dust & re-circulates media
- Power: 110-120v standard
- Air pressure and vol: 75-160 psi, 8-22 cfm
- Hose length: 8.5' (2.5M) standard
- Aluminum Oxide recommended. However softer abrasives like glass beads, metal shot, nut shells can be used

Applications

- Glass Etching: identification marks, artwork etc
- Deep surface cleaning to remove rust, paint and corrosion with no heat, no surface distortion and no dust
- Graffiti removal from metal, concrete and stone
- Cleaning of acrylic paint



Pressure Blaster

MODEL # **PB-100**

- Designed for removing dirt and rust
- Abrasive flow control valve and air inlet shut off valve
- Heavy steel grit or shot
- Blasting sand
- Heavy duty 4 ply hose
- 100 Lbs. media capacity, 8' hose
- Ceramic nozzle with safety shut off



Glass Beads, 50 Lbs Bag

MODEL # **BC-0400**

- 30-40 (Medium-Coarse)

Glass Beads, 50 lbs Bag

MODEL # **BC-0300**

- 20-30 (Medium-Coarse)



Safety Shut Off control nozzle for PB-100

MODEL # **PB-100S000S**

- Includes ceramic nozzle



Replacement Nozzle 1/8" Ceramic

MODEL # **PB-100260**



Aluminum Oxide 50 lb Bag

MODEL # **BC-0600**

- 60 (Medium-Coarse), Brown
- Sold by the bag

Aluminium Oxide 50 lb Bag For Media Reclaimer's Only

MODEL # **BC-0360**

- 30-35 (Medium-Coarse)



Garnet 30-60 Mesh, 55 lb bag

MODEL # **BC-0650**

Garnet 80 Mesh, 55 lb bag

MODEL # **BC-0700**

Garnet 120 Mesh, 55 lb bag

MODEL # **BC-0120**

Garnet 220 Mesh, 55 lb bag

MODEL # **BC-0220**

PARTS WASHERS

SOLVENT PARTS WASHERS



Large Capacity Tanks, Made With Heavy Gauge Steel

Both models feature:

- Fire safety lids
- Powder coated finish
- 16 and 18 gauge steel body
- A flexible metal hose
- A Flo-Thru brush
- A CSA approved Electric Pump
- A parts tray with drain holes to prevent loss of small parts



Parts Washer w/5 Gal. Pail Cover

MODEL # **PW-3000**

- Cleaning area: 31" x 16" x 11"
- Overall size: 32" x 17" x 40"



HD Parts Washer w/10 Gal. Solvent tank & cover

MODEL # **PW-3900**

- Cleaning area: 37" x 19" x 11"
- Overall size: 38" x 20" x 40"

Optional Liner Bags for 10 gal Solvent tank for PW-3900 - PKG of 10

MODEL # **PW-50BAGS**

REPLACEMENT PARTS



Flo-Thru Brush

MODEL # **PWB-150**



Parts Washer Pump

MODEL # **PWP-100**



Flex Hose Spout

MODEL # **PWS-2100**



Fusible Link

MODEL # **FBL-160**

30" x 3/4" Plastic Tube for Parts Washers

MODEL # **PWS-2200PT**

AUTOMATIC SPRAY GUN CLEANER (SPECIAL ORDER ITEMS)

Clean your spray guns fast, reduce solvent consumption and save money while helping to eliminate the following:

- Pollution in your shop
- Hazardous waste disposal problems
- Irritating skin conditions caused by handling solvents
- Continuous solvent consumption
- Wasted time, manual cleaning

MODEL # **SPG-1100**

- Cleans 1 gun, 1 pot per cycle
- Overall dimensions 14.3"W x 13.6"D x 40.6"H



MODEL # **SPG-1100**

Don't see what you are looking for? Visit:

CANBUILT.COM

H.D. OIL & GEAR LUBE PUMP KITS



1:1 AIR OPERATED LUBE (OIL) PUMP KITS FOR 60L KEG AND 205L DRUM

Included: 1:1 Pump, control handle, hose, dolly for keg or drum and steel cover for keg only. Ideal for straight transfer of light oils

KITS FOR KEG

w/ Manual Control Handle

MODEL # GLP-22705CH

w/ Digital Metered Control Handle

MODEL # GLP-22705DM

w/ Digital Preset Metered Handle

MODEL # GLP-22705DPM

KITS FOR DRUM

w/ Manual Control Handle

MODEL # GLPD-22705CH

w/ Digital Metered Control Handle

MODEL # GLPD-22705DM

w/ Digital Preset Metered Handle

MODEL # GLPD-22705DPM



3:1 HD MOBILE LUBE (OIL) STATION KIT

Included: 3:1 Air operated pump, oil control handle, 10' delivery hose, 1/2" x 50' hose reel mounted on HD service truck



KITS FOR KEG

w/ Manual Control Handle

MODEL # LPCK-22715CH

w/ Digital Metered Control Handle

MODEL # LPCK-22715DM

w/ Digital Preset Control Handle

MODEL # LPCK-22715DPM

KITS FOR DRUM

w/ Manual Control Handle

MODEL # LPC-22715CH

w/ Digital Metered Control Handle

MODEL # LPC-22715DM

w/ Digital Preset Control Handle

MODEL # LPC-22715DPM

3:1 AIR OPERATED GEAR LUBE PUMP KITS FOR 60L KEG AND 205L DRUM

Included: 3:1 Pump, control handle, hose, keg or drum dolly and steel cover, only for keg. Ideal for straight transfer of light oils

KITS FOR KEG

w/ Manual Control Handle

MODEL # GLP-22715CH

w/ Digital Metered Handle

MODEL # GLP-22715DM

w/ Digital Preset Metered Handle

MODEL # GLP-22715DPM

KITS FOR DRUM

w/ Manual Control Handle

MODEL # GLPD-22715CH

w/ Digital Metered Handle

MODEL # GLPD-22715DM

w/ Digital Preset Metered Handle

MODEL # GLPD-22715DPM



Oil Transfer Tap Only

MODEL # TAP-1894

Air Operated Oil Pump with TAP

MODEL # LP-22705TAP

- Includes 1:1 Pump w/5GPM rate, 2" bung adapter. For oils only. Not for water based fluids

Drum Level Indicator Gauge

MODEL # DL-55

- Fits small 3/4" drum hole
- Suitable for oil, water, WWF, antifreeze, DEF and Diesel fuel



HEAVY DUTY GREASE PUMP KITS



60:1 HD MOBILE GREASE STATION KIT

Included: 60:1 Pump, Control handle, Z swivel, 1/4" high pressure grease hose, with 1/4" x 50' grease reel mounted on HD service truck, follower plate and lid cover

KIT FOR DRUM

MODEL # GPC-12210R

KIT FOR KEG

MODEL # GPC-12205R



60:1 HD COMPLETE GREASE PUMP KIT FOR 120LB/60L KEG AND 400LB/205L DRUM

Included: high pressure grease hose, 1/4" quick coupling, drum lid, Z swivel, grease control handle, follower plate, and dolly for keg or drum

HD Kit for 120 Lbs Keg w/10' grease hose

MODEL # GP-12205C
(no dolly)

MODEL # GP-12205K
(with dolly)

HD Kit for Drum w/10' grease hose

MODEL # GP-12210C
(no dolly)

MODEL # GP-12210K
(with dolly)



Kit pumps also sold separately

STANDARD DUTY GREASE PUMP KITS 55:1 PRESSURE RATIO

Kits Include: Pump GP-12540 for pail, or GP-12541 for keg, w/ bung adapter, control handle, Z swivel, grease hose 1/4", quick coupler, follower plate, cover for pail or keg and dolly for keg

Kit for Pail

MODEL # GP-12130C

Kit for Keg

MODEL # GP-12132K

55:1 Standard Duty Grease Pump Only for Pail

MODEL # GP-12540

- Total height 28"
- Downtube 20-5/64"

55:1 Standard Duty Grease Pump Only for Keg

MODEL # GP-12541

- Total height 36-1/2"
- Downtube 28-1/2"



Available Covers:

MODEL # 18527 for pail

MODEL # 18532 for keg

MODEL # 18525 for drum

HEAVY DUTY PUMPS



AIR OPERATED PUMPS

TYPE	1:1 FOR LIGHT OILS	3:1 FOR GEAR LUBE	5:1 FOR GEAR LUBE	15:1 FOR OIL	60:1 FOR GREASE
Stub	MODEL # LP-22800 For Pail/Wall Mount	MODEL # LP-22810 Wall Mount	MODEL # LP-22750 Wall Mount	MODEL # LP-22760	MODEL # GP-12751 For 120 Lbs Keg
Long	MODEL # LP-22805 For Drum	MODEL # LP-22815 For Drum	MODEL # LP-22752 For Drum	MODEL # LP-22762	MODEL # GP-12752 For 400 Lbs Drum

Note: Stub pump down tube, optionally available. Cut to length.

OIL SUCTION PUMP

1:1 Ratio, Suction and Waste Oil Pump

MODEL # SP-22802

- Speed regulated mechanism
- Creates high vacuum
- Closed system. No spillage. No body contact
- No waste oil collector needed
- Direct emptying from vehicles or Waste Oil Units
- 15 LPM @ 90 psi
- For non-corrosive fluids only



**Flexible NPT Outlet
Hose 95° with Auto
Tip 1/2"**

MODEL # FH-1415

**Flexible 1/2" BSP
Outlet Hose 95° with
Auto Tip**

MODEL # FH-1516

RECOMMENDED WITH
ALL AIR OPERATED
PUMPS

**2-in-1 Filter Regulator
w/ Pressure Gauge
1/4" NPT**

MODEL # FLR-1559



OPTIONAL
RECOMMENDED

**3/4" Stainless steel
Y-Strainer for Waste Oil
Pumps 3/4 In/Out**

MODEL # DP-3500Y

Filter screen should be
used when pumping
waste oil

Optional Drum Suction Kit for Stub Pump

Comes with foot valve,
bung adapter and 8'
flexible hose

MODEL # 28310



**14" Lube Hose 1/2"
NPT w/Manual Twist
Non Drip Tip**

MODEL # FH-1315



**Wall Mount Bracket
for Stub Pump**

MODEL # 28524



**Bracket 30mm for FLR
Units for Large Air Motors**

MODEL # 202 6154



**Air Hose, Pump to FLR
system**

MODEL # 222 6155

FLUID & GREASE PUMPS



FLUID PUMP FOR ANTIFREEZE/COOLANT

1:1 Ratio, Corrosion Protected, Stubby Pump Only

MODEL # **FP-22720**

1:1 Ratio, Corrosion Protected, Long Pump w/ Pick-up tube

MODEL # **FP-22725P**



1:1 HD FLUID KIT FOR 205L DRUM

Included: 1:1 corrosion protected pump, control handle, 10' delivery hose down tube and drum dolly

KITS FOR DRUM

w/ Standard Control Handle

MODEL # **FP-22720CH**

w/ Digital Metered Handle

MODEL # **FP-22720DM**



1:1 HD MOBILE (FLUID) STATION KIT FOR DRUM

Included: 1:1 corrosion protected pump, control handle, 6' lead hose, 1/2" x 50' hose reel mounted on HD service truck

w/ Standard Oil Control Handle

MODEL # **FPC-22725CH**

w/ Digital Meter Handle

MODEL # **FPC-22725DM**

Optional Replacement Hoses Available

HIGH VOLUME GREASE/LUBE PUMP

For BULK TRANSFER of "00" Grease.

IDEAL for bulk filling central lube systems

Included: Hose, telescopic suction tube and 2" standard bung adapter

Grease or Oil Pump for Pail Includes Pail Cover

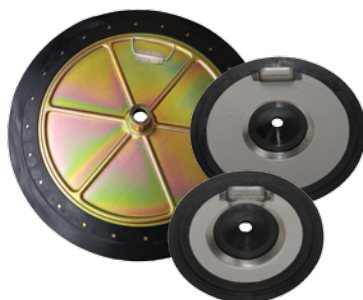
MODEL # **GP-21650P**

Grease or Oil Pump for 60 Litre Keg Includes Keg Cover

MODEL # **GP-21650K**

Grease or Oil Pump for 45 Gal. Drum

MODEL # **GP-21650**



Optional Follower Plates for:

Pail: MODEL # **OR-18570**

Keg: MODEL # **OR-18571**

Keg: MODEL # **OR-18572**

Drum: MODEL # **OR-18575**

CONTROL HANDLES



GREASE CONTROL HANDLES

GH-17852	GH-14612	GH-99600	GH-17900D
Manual HANDLE WITH Z-SWIVEL & FLEXIBLE HOSE	Manual	Manual HANDLE WITH Z-SWIVEL & FLEXIBLE HOSE	Digital Grease Control Valve 1/4" NPT 8700psi

GREASE BEARING PACKERS



For Pail

MODEL # GP-3333



Heavy Duty for Pail

MODEL # GP-3330



Manual Grease Pump

MODEL # GP-0550



Grease Gun Filler

MODEL # GP-0328



Sealed Bearing Packer
- Needle 1/16" & 1 1/2"
Long

MODEL # DC-ZE65

Pump & Bearing packer
for 120lb Keg Drums

MODEL # DC-ZE343

- For 25-50 lb pail
- For light up to NLGI #2 grease
- 6' hose, coupler, carry handle, steel pail cover, and follower plate

- For 35 Lbs. pail
- Pump, dust cap & follower plate included

MANUAL GREASE GUNS



Pistol Grip Grease Gun

MODEL # HG-1220



Lever Action Grease Gun

MODEL # DC-ZEHD4



Pistol Grip Grease Gun

MODEL # DC-ZEHD5

GREASE COUPLERS



HD Lock-on Grease Coupler to 15,000 PSI (No Valve)

MODEL # DC-UC-2121



HD Lock-on Grease CPLR w/Built in Relief Valve

MODEL # DC-UC-2020

SWIVELS FOR GREASE

1/4" x 1/4" Straight Swivel

MODEL # GH-18070



Universal Z-Swivel

MODEL # GH-18071

WHIP HOSES FOR GREASE



MODEL # WH-1260

12" 5,800 PSI 1/8" NPT

MODEL # WH-1261

16" 5,800 PSI w/Coupler

MANUAL PUMPS

38L/
100 Rev



3 Vane HD Rotary Hand Pump

MODEL # **FP-380**

- Inlet 1"
- Outlet 3/4"
- For medium viscosity oils, kerosene & diesel fuel

25L/
100 Rev



Rotary Pumps Polyprop./Viton Seals

MODEL # **BP-900P**

- For washer fluid and antifreeze



Diaphragm Pump

MODEL # **FP-152**

- 76 L/100 Strokes
- For gas, diesel and most non-corrosive petroleum based fluids
- 22-39" suction tube
- 2 year warranty



Non Drip Barrel Pump

MODEL # **BP-1242**

- 1 gal per 9 strokes
- Variable stroke
- Telescopic suction tube
- Light oils, ATF, gear lube, kerosene, diesel
- Not water based fluids



Transfer Pump

MODEL # **BP-1241**

- For lubricants & non corrosive fluids



Polypropylene Pump

MODEL # **BP-490S**

- For lubricants, water based chemicals, WWF, Antifreeze



90L/100
strokes

Hand Fuel Pump

MODEL # **FP-920**

- Inlet 1" / Outlet: 3/4"
- For light viscosity oils, kerosene & diesel fuel

FUEL NOZZLES



3/4" x 3/4" Automatic - Gasoline

MODEL # **FTH-1541**

3/4" x 1" Automatic - Gasoline

MODEL # **FTH-1542**



3/4" x 3/4" Manual Utility Fuel Nozzle

MODEL # **FTH-100**



1" x 1" Automatic - Diesel

MODEL # **FTH-1544**

MANUAL GEAR OIL PUMPS

Both Units feature:

- HD standard steel pail cover
- Complete w/hose & nozzle



For 20L Pail

MODEL # **PP-3210**



For 60L Kegs

MODEL # **KP-3360**

OPTIONAL
Wheel Dolly for Keg
MODEL # **DD-5159**



PAIL PUMP

20L Pail Pump

MODEL # **BP-3520**

- Engine, Gear & Light Fuel Oil, Diesel, ATF, Antifreeze, Brake Fluid
- Plastic Bucket Pump with 48" Hose and steel spout fits 5 Gal. pails



Buttress Adapter 2" for Plastic Drums

MODEL # **BA-28235**

FLUID TRANSFER PUMPS

DIESEL EXHAUST FLUID (DEF) PUMPS



MODEL # DEF-12506

- 12V / 180W
- ON/OFF power switch
- 6.6 GPM / 25LPM
- 1.5 Meter suction hose
- 6 Meter delivery hose
- Hose tails and clamps
- Includes manual nozzle

Manual DEF Handle

MODEL # DEF-12507



MODEL # DEF-32V

Manual Diesel Exhaust Pump

- Output 473 ml. per stroke
- 2 in. NPT bung adapter
- Telescoping suction tube
- Included: 3/4" hose outlet spout
- For oil, water based fluids, DEF, and agricultural chemicals



12V Diesel Transfer Pump 3/4"

MODEL # DTP-4012V

- 12V Self-Priming transfer pump
- 10GPM / 40LPM
- 6.5'/2 m suction hose
- 13'/4m delivery hose
- Hose tails and clamps
- Includes aluminum manual nozzle

Replacement Manual Nozzle for diesel

MODEL # DTN-50L

- Diesel & Kerosene



DIAPHRAGM PUMP FOR WASTE OIL

MODEL	IN/OUT	FLOW RATE	SOLIDS	OPERATING PRESSURE
DP-3600	3/4"	60 LPM/16GPM	1/8"	90-100psi

A filter, lubricator, regulator is mandatory for optimum performance and longevity of air motor pumps

See pages 24 and 34 for available
Filter Regulator Lubricator models



3/4" Brass Y Strainer

MODEL # DP-3501YB

- Highly Recommended for all waste oil pumps to prevent particulates from clogging or damaging the pump

3/4" Stainless Y Strainer

MODEL # DP-3500Y

FLUID HANDLING & STORAGE



Diesel Fuel Transfer Tank
MODEL # FT-5325HVD



HIGH VOLUME FUEL STORAGE AND TRANSFER TANKS

- 28 US Gal. capacity - Shipping weight: 60 Lbs.
- Shut off delivery valve
- Manufactured with UN/DOT approvals (UN3H1W) and recognized by TSSA
- Includes HD Pump



Fuel Transfer Tank
MODEL # FT-5325HV

UN/DOT APPROVED EXPLOSION-PROOF TRANSFER PUMPS



12V x 20 gpm /Manual Handle
MODEL # FTP-01220M

- For Gasoline



12V x 20 gpm / Automatic Handle

MODEL # FTP-01225C

- For Diesel
- 14' hose, 2" bung adaptor
- Mounts to either tank or drum



Electric Pump for Drum

MODEL # DC-20090

- Includes AC 100~240V power adapter, hose and handle
- 33.5" (850mm)~49" (1245mm)
- For 55 gallon drum and IBC Totes
- Used for: Diesel, DEF(AdBlue), water, kerosene, mild detergents, antifreeze, agricultural chemicals, windshield washer fluid, motor oil, hydraulic oil, light oils (max 100cst)



Electric Pump for Pail

MODEL # DC-20078

- Includes pail lid, a.c. power adapter, hose and handle
- Used for: engine oil, DEF, hydraulic fluids, gasoline, diesel, AG chemicals, ww, anti-freeze



1" Mechanical In-Line Meter for Diesel

MODEL # FRM-807-1

- Max operating pressure: 50 PSI
- Accurate to $\pm 1\%$
- Flow Rate: 5-32GPM/20-120LPM

WASTE FLUID HANDLING

FOR CARS, TRUCKS OR FARM VEHICLES, TAKE YOUR PICK



Mobile Air Operated Waste Oil Drain

MODEL # **DR-290**

- 90L/24 Gal. Capacity
- 18L/4.8 Gal. Bowl capacity
- 76.8" Max. Height
- 1/4" NPT female air inlet

Funnel Extension Replacement

MODEL # **DR-290FE**



2-in-1 Cantilever Waste Oil Drainer & Changer

MODEL # **DR-290CAN**

- 90L/24 Gal. Capacity
- 100-115 PSI Air pressure for vacuum
- 61" Max. - 43.3" Min. Height
- ideal for higher clearance vehicles and farm equipment.



2-in-1 Waste Oil Drain & Changer w/ Vacuum Chamber

MODEL # **DR-290VAC**

- 90L/24 Gal. Capacity
- 10L Vacuum chamber capacity
- 100-115 PSI Air pressure for vacuum
- 150-180 Secs. depressurization
- 6.5' Suction hose
- 70.8" Max. - 43.3" Min. Height

30L Air Operated Suction Oil Changer

MODEL # **DR-130**

- 30L/8 Gal. Capacity
- 100-115 PSI work pressure
- 6.5' Suction hose
- 1/4" NPT female air inlet
- 33lbs. Weight
- 6 probes, 2 adapters for Mercedes, BMW, Volkswagen



Pressurized Mobile Oil Dispenser w/ Funnel

MODEL # **DI-230**

- 30L/8 Gal. Capacity
- 145 PSI working pressure
- 6.5' Flexible hose
- 1/4" NPT female air inlet
- 33lbs. Weight
- Funnel extension included: DR-290FE



WASTE FLUID HANDLING

Polypropylene Oil Drain Wagon (only)

MODEL # DR-037

- Easily rolls under larger vehicles to contain oil, antifreeze etc.
- Does Not rust

MODEL # DR-037CP

- Complete, includes Evac Kit DR-037PK



Port Side: 3/4"

Steel Oil Drain Wagon - 18 Gal. Cap.

MODEL # DR-270

- Side port 1/2" (can be retrofitted to use the Evacuation Kit DR-037PK)
- Top port 3/8"
- Heavy duty Steel splash screen
- 8" height x 25 1/2" width x 47 1/2" length



Evacuation Kit (pump only)

MODEL # DR-037PK

- 115 volts
- 6 GPM



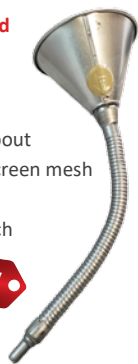
impeller Replacement Kit for DR-037PK

MODEL # RP-DR-037EK

Funnel w/Screen and 14" Flex Metal Spot

MODEL # DC-ZE86

- 6-inch Diameter
- 14-inch Flexible spout
- Includes a brass screen mesh
- Capacity: 1 quart
- Outlet ID: 7/16 inch



NEW



60L Gravity Drain

MODEL # DR-790K

- All steel construction
- Height adjust from 44" to 69"
- Steel drum with 3/4" gravity drain valve and gauge stick
- H.D Wide track 4 swivel caster dolly 3" Wheels



2" Poly Drain Valve

MODEL # DV-6700



3/4" Drum Faucet

MODEL # DF-100



2" Cast Iron Bung Faucet

MODEL # DC-ZE64



5L Plastic Measure Flexible Spout

MODEL # PM-5000



3 Pack Non Sparking Drum Wrench

MODEL # DW-45-3

- For 3/4" and 2" drum bung

TRUCKS & DOLLIES

HYDRAULIC PALLET TRUCK

Standard Pallet Truck
27"W x 48"L forks

MODEL # **PT-5500E**

- HD Steel Centered Wheels, Polyurethane tread
- 2.9" Fork low
- 7 3/4" Fork high
- 5500 Lbs. Capacity



DRUM SERVICE TRUCK

45 Gal. Drum Service Truck

MODEL # **DT-250**

For transporting and dispensing drums

- 600 Lbs. Capacity
- 2 Locking Rear Wheels
- 2 H.D. 8" Front Wheels
- Includes Universal Hose reel mount



OPTIONAL: SERVICE TRUCK
FOR KEG MODEL # **DT-251**
ALSO AVAILABLE

HEAVY DUTY DRUM & HAND TRUCKS



1000 Lbs Capacity Drum Truck

MODEL # **DT-100**

- 10" Solid rubber wheels

1000 Lbs Capacity Self Standing Easy Tip Drum Truck

MODEL # **DT-101**

- 10" Solid rubber wheels

8" Hard Tread Wheels

MODEL # **HC-3**

- 600 Lbs. Capacity
- 5/8 shaft
- All steel welded
- HD Tubing for strength

10" Pneumatic Wheels

MODEL # **HC-4**

- 600 Lbs. Capacity
- 5/8 shaft

DRUM DOLLIES



60L/16Gal. Keg Dolly
14 1/2" Diameter

MODEL # **DD-5159**

- All steel construction

Replacement Wheel

MODEL# **WK-14**



205L/54Gal. Drum Dolly
23" Diameter

MODEL # **DD-45**

- All steel construction

Replacement Wheel

MODEL# **WK-361**



Drum Tip Over Stand

MODEL # **45RKD**

- 600 Lbs. capacity
- For easy drum manipulation
- Roll over allows dispensing from drum
- Knock Down Version

ROLLING LADDERS, CARTS & TRUCKS

ROLLING LADDERS

- Exceed CSA Safety standards as per ANSI AA14.7 and OSHA 1910.27
- Spring loaded wheels
- HD Tubing for strength
- Non-skid steps & platform
- Floor locking mechanism
- 400 Lbs. Capacity



2 Step

MODEL # RL2NH

- No Handrail



3 Step

MODEL # RL3NH

- No Handrail



4 Step

MODEL # RL4NH

- No Handrail



5 Step

MODEL # RL5H

- With Handrail



10 Step

MODEL # RL10H

- With Handrail



16 Step

MODEL # RL16H

- With Handrail

Available ladders from 2 up-to 20 steps. Also, gated walk-through options. Ask us for availability



Units 8 Step and up can be folded for storage or shipping

GAS CYLINDER TRUCKS



8" Wheels

MODEL # GT-8SR

- 200 Lbs. Capacity



8" Wheels

MODEL # GT-080KD

- * Knocked down.
- Some assembly required



8" Wheels

MODEL # GT-100KD

- * Knocked down.
- Some assembly required



14" Wheels

MODEL # GT-141

- * Knocked down
- Some assembly required

WELDING CARTS & GARAGE TOOLS

MIG WELDING CARTS



MODEL # GT-290

- Top Shelf Dimensions: 12.5" W x 22.5" L
- Overall Cart Dimensions: 18.5" W x 26.5" H
- Weight Capacity: 110 lbs



MODEL # GT-280

- Overall Height: 33 1/2" (Handle end)
- 24 3/4" (Rear end)
- Overall Width: 14 1/2" (including wheels)



WELDING HOSE REELS

MODEL # WR-1809

- 50' Retractable Twin Welding Hose Reel

MODEL # WR-1825

- 100' Hose Reel for Welding Gas

Heat Gun Kit

MODEL # HG-1150

- Powerful 1,500 Watt motor
- Dual power settings
- Ideal for paint, varnish, lacquer and label removal, thawing or drying, forming and welding plastics, softening caulking and putty, heat shrinking plastics, soldering pipes or loosening joints and screws
- Built-in thermal protection prevents overheating
- Double insulation



Tire Test Tank

MODEL # TR-3414

- Outside : 34" L x 14" W x 14 3/4"
- Inside : 31 1/2" L x 14" W x 12"

Stand Only

MODEL # TR-3414S

Upsize Tire Test Tank

MODEL # TR-3444

- Outside : 37 3/4" L x 18" W x 17 1/4"
- Inside : 35" L x 15 1/4" W x 16 1/2"

Dealer Plate Holder (Package of 6)

MODEL # DPH-100-6



"Leakfinder" Smoke Machine

MODEL # EVP-WV608



Smoke Solution w/ Dye

MODEL # EVP-0712UV

Smoke Solution w/o Dye

MODEL # EVP-0716

WELDING TOOLS & ACCESSORIES

Metal Master Cutting Torch Kit

MODEL # **MMTK-900H**

- PROFESSIONAL SERIES
- Harris Style
- Capacities: Welding up to 1/2"
- Cutting up to 5" w/tip size 4



Cylinder Adapter #61 for 300-510 Acetylene Tanks

MODEL # **MMTK-WES61**

Metal Master Cutting Torch Kit

MODEL # **MMTK-900V**

- PROFESSIONAL SERIES
- Victor Style
- Capacities: Welding up to 1/2"
- Cutting up to 5" w/tip size 4



Magnifying Lens

MODEL # **LM-175**

- 2" x 4 1/4"
- Diopter 1.75 Mag-175
- Other magnifications available

OXY/ACETYLENE CUTTING TIPS

HARRIS STYLE MODEL	VICTOR STYLE MODEL#	TIP SIZE
CTH-6290-0	CTV-0-1-101	0
CTH-6290-1	CTV-1-1-101	1
CTH-6290-2	CTV-2-1-101	2
CTH-6290-3	CTV-3-1-101	3
CTH-6290-4	CTV-4-1-100	4

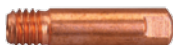
PROP/NG CUTTING TIPS

HARRIS STYLE MODEL	VICTOR STYLE MODEL#	Tip Size
CTH-6290-0NX	CTV-0-GPN	0
CTH-6290-1NX	CTV-1-GPN	1
CTH-6290-2NX	CTV-2-GPN	2
CTH-6290-3NX	CTV-3-GPN	3
CTH-6290-4NX	CTV-4-GPN	4



MIG TIPS

MODEL	CONTACT TIPS SIZES
MT-1527-06	Mig Tip (5 pkg) (.024)
MT-1527-08	Mig Tip (5 pkg) (.030)
MT-1527-09	Mig Tip (5 pkg) (.035)
MT-2504-06	Mig Tip (5 pkg) (.024 M6 ECU)
MT-2504-08	Contact Tip (5pkg.) .030 M6 ECU
MT-2504-09	Contact Tip (5 pkg.) .035 M6 ECU
MT-2504-10	Contact Tip (5 pkg.) .040 M6 ECU



Tip Cleaners

MODEL # **TC-1**

MIG WIRE - MILD STEEL

MW-6091	(0.9mm) (1kg Spool)
MW-6095	(.9mm) (5kg Spool)



MODEL # **WG-PW1002**



MODEL # **WG-PW1003**



MODEL # **WG-PW4000L**
MODEL # **WG-PW4000XL**

REPLACEMENT WHEELS



10" Pneumatic

MODEL # **RWK-10**

- Sold as set of 2
- 10" x 5/8" hub
- 3/4" also available



8" Hard Tread

MODEL # **RWK-8**

- Sold as set of 2
- 8" x 3/4" hub



6" Swivel Crown Tread Cast Iron No Brake

MODEL # **WK-6NB**



6" Swivel Crown Tread Cast Iron w/ Brake

MODEL # **WK-6BRK**



5" Swivel Caster w/ Posilock for DT-250

MODEL # **WK-5SPL**



4" Swiv. Steel w/dust shield

MODEL # **WKS-14**



3" Flat Top Swivel Poly Wheel (for DD-45)

MODEL # **WK-361**



3" Swivel 1/2" Stem Caster w/lock

MODEL # **WK-31B**



3" Swivel Stem Type Caster Wheels

MODEL # **WK-31**



3" Stem Caster (80 lb.cap)

MODEL # **WK-14**

Don't see what you
are looking for? Visit:



CANBUILT.COM

HOSES

6' Lead Lube Hose 1/2" for LPC-22715, FP-22720

MODEL # **H-12006**

6' Oil Hose 1/2" Male NPT x 1/2" Male NPT Swivel

MODEL # **H-12006S**

10' Oil Hose 1/2" Male NPT x 1/2" Male NPT Swivel

MODEL # **H-12010**



20FT DEF Hose

MODEL # **H-12506**

1/4"x10' BSP High Pressure Grease Hose, F/Swivel

MODEL # **H-14210**

A

Air Compressors	26, 27
Air Dryer	27
Air Diaphragm Pumps	38
Air Blow Guns	9, 16, 25
Air Pumps (Oil & Grease)	32-34
Air Pump Accessories	34
Auto Drains for Compressors	26-27
Axle Drain Pan	9

B

Bench Grinders & Stands	22
Blast Cabinets & Blast Media	28-30
Blow-Guns	25
Bottle Jacks	8
Brake Bleeder	15

C

Carts	23, 44
Caster Wheels	46
Compressors	26, 27
Control Handles	25, 37
Cranes & Accessories	18-21
Cutting Torch Kit	45

D

Dealer Plate Holders	44
DEF & Diaphragm Pumps	38, 39
Digital Gauges	13
Dollies	7-42
Drain Valves	41
Drill Press	22
Drum Level Indicator	32
Drum Trucks	42-44
Drum Tip Over Stand	42
Drum Wrench	41
Dual Wheel Dollies	9
Dust Collector	29

E

Electric-Hydraulic Presses	24
Electric Pumps	31, 38, 39, 41
Engine Stand	9
Evacuation Kit (Waste Oil)	41

INDEX

F

Faucets & Measures	41
Filter Crushers	17
Filter, Reg., Lubricators	24, 27, 34
Floor Jacks	2, 3, 6
Fluid Handling & Storage	39
Fluid Pumps	35, 37, 39
Follower Plates	35
Fuel Caddies & Pumps	39
Fuel Nozzles	37
Fuel Transfer Pumps	38, 39
Funnel with Screen	41

G

Gas Cylinder Trucks	43
Gear Oil Pumps (Manual)	37
Grease Couplers	36
Grease Pumps & Kits	33, 35
Grease Guns & Bearing Packers	36
GoJak Car Dollies	7
Gun Cleaners	31

H

Hand Pumps	35-37
Hand Trucks	42, 43
Headlight Aimer	12
Headlight Restoration Spray	BP
Heat Gun	44
HD Hose Reels & Hoses	25, 44
Hydraulic Power Packs	8

I

Inflators & Inflator Gauges	16
-----------------------------	----

J

Jacks (HD)	2, 3, 5-8
Jack Stands	4

L

Leak-finder Detector Machine	44
Lever Style Pumps	35-37
Long Rams	8
Lube Brush/Swab	14
Lubrication	32-33

M

Manual Pumps	8, 35-39
Mechanical Meter (Diesel)	39
Metal Cutting Torch Kits	45
Mig Welding Carts	44
Mobile Lube, Grease, fluid Kits	32, 33, 35, BP
Motor Stand	9
Motorcycle, ATV Lift	10

N

Neoprene Liner	23
Nozzles (for Fuel)	37

O

Oil Drains (HD) & Wagon	40, 41
Oil Pumps & Kits	32, 34, 35, BP
Oil "Y" Strainers	38

P

Pallet Truck	42
Parts Washer & Parts	31
Pistol Grease Guns	36
Plastic Measures	41
Pneumatic Jacks	6
Presses (HD)	24
Pressure Blaster	30

R

RakJak Air Bag Lift	6
Rams	8
Retractable Reels	25, 44
Rolling Ladders	43
Rotary Pumps	37, BP
Rustproofing Kits	17, BP

S

Safety Inspection Packages	12, 13
Safety Stands	4
Sand Blaster	30
Service Jacks	3
Smoke Machine	44
Solvent Part Washers & Parts	31
Spray Gun Cleaners	31
Scissor Frame Jack	10
Suction Pump	34

T

Tire Changers/Accessories	14-16
Tire Inflation Gauges	16
Tire Test Tanks	44
Trailer Stands	4
Transmission Jacks	5
Treadle Pump	8
Truck Wheel Dollies	9, 42

U

Utility Cart	23
--------------	----

V

Vac Blaster	30
Vacuum Pump	40
Vises	22-23
Vehicle Lifts	10 - 11

W

Waste Oil Drains	40, 41
Waste Oil Pump (Air)	34
Water Separators	24, 34
Wet Bench Kit	23
Welding Carts & Hoses	44
Welding Gloves & tips	45
Wheel Balancer	15
Wheel Chocks	3
Wheel Dollies	9
Wheel Lift for Balancer	15
Wheel-On Digital Gauges	17
Wheel Weight Tool	15
Whip Hoses (Grease)	36
Windshield Coating	BP
Window Tint Meter	13
Workbenches	23



Supporting our distributors
coast to coast since 1969

NEW ARRIVALS



One-Step™ Headlight Restoration Spray

Headlight Restoration Spray

Instantly restores oxidized headlights without the fuss. Simply spray on and watch your headlights regain their clarity!

MODEL # **DC-DTR241**

- Single-Use 3 oz / 85 g

MODEL # **DC-DTR265**

- Professional 10 oz / 283 g
Restores up to 16 lenses



Ceramic Windshield Coating

Advanced Water Repellent

Forms a long-lasting, ultra-hydrophobic barrier that chemically bonds to glass, repelling rain sleet and snow for up to 1 year!

MODEL # **DC-DTR289**

- Single-Use package

MODEL # **DC-DTR272**

- Professional 10 Kits



Mobile Lube station for Keg

MODEL # **LPCK-22715CH**

MODEL # **LPCK-22715DM**

MODEL # **LPCK-22715DPM**

SEE PAGE 32

Rotary Pump: Ryton Corrosion Resistant

MODEL # **DC-ZE1014R**

- For aggressive chemicals, chlorinated solvents, and hydrocarbons
- Dispenses 1-gallon per 16 revolutions
- Fits 2" bung opening on 15-55 gallon drums



Fast-Flow Zinc Plated Pump (1 Gallon Per 8 Lifts)

MODEL # **DC-ZE10130**

- For soaps, waxes and other noncorrosive.
- Removable spout threaded for 3/4" garden hose fitting
- Designed to fit a 2 inch bung on 15 to 55-gallon drums



Complete System 10L Pot, Dual Regs, Gauges Hose and Gun

MODEL # **LRP-L011080**



Professional Rustproofing Gun Kit, 1L Container and Z Swivel

MODEL # **LRP-L015201**



Gun Filter Kit, Wht 5X W/Spring for L033-150, -210

MODEL # **RP-LRPL032102**



Mesh Filter 100m for LRP-F1001

MODEL # **RP-LRPL011906**