



CANBUILT MFG.

www.canbuilt.com

April 2022

MANUAL GREASE PUMPS

MANUAL GREASE PUMP

Model # **GP-0550**

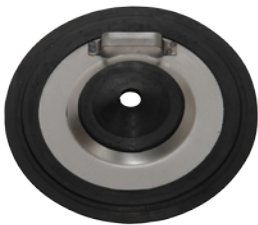
- H.D. High Pressure: 3500 psi grease pump
- Fits 25 to 50lb grease pail
- Complete with 6' grease hose with coupler, carry handle, steel pail cover, and follower plate
- Delivers 1.2 oz. per 28 stroke
- Use with light to medium grease up to NLGI #2. Not for heavier grease



GREASE GUN FILLER

Model # **GP-0328**

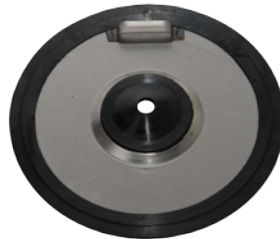
- H.D. trouble free design
- Fits 35 lb grease pail
- Complete with pump, filler valve dust cap, and follower plate



FOLLOWER PLATE FOR PAIL

Model # **OR-18570**

- Dimensions: OD 265-290mm ID 24.56mm



FOLLOWER PLATE FOR KEG

Model # **OR-18571**

- Dimensions: OD 340-360mm ID 30mm



FOLLOWER PLATE FOR DRUM

Model # **OR-18575**

- Dimensions: OD 585mm

Model # **OR-18572**

- Dimensions: OD 370 mm

Whip Hose Available:

16" Model # **WH-1261**

PISTOL GRIP GREASE GUN

Model # **HG-1220**

- Max outlet pressure: 5,000PSI
- Delivery: 1oz per 40 strokes
- Capacity 14 1/2 oz cartridge
- Threads 1/8" NPT



103 Milvan Drive, Toronto, Ontario, Canada, M9L 1Z7

Toll-Free in Canada: 1-888-607-2926 Phone: 416-749-6555 Fax: 416-749-7597 Email: sales@canbuilt.com